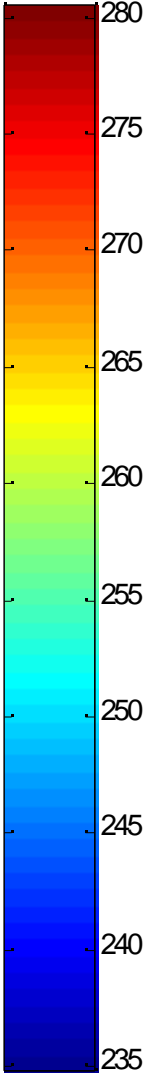
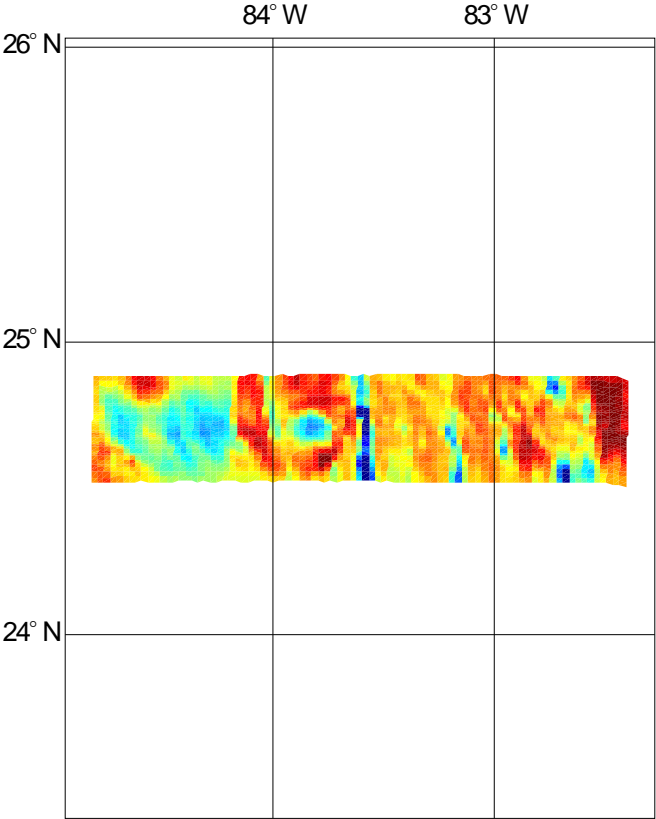
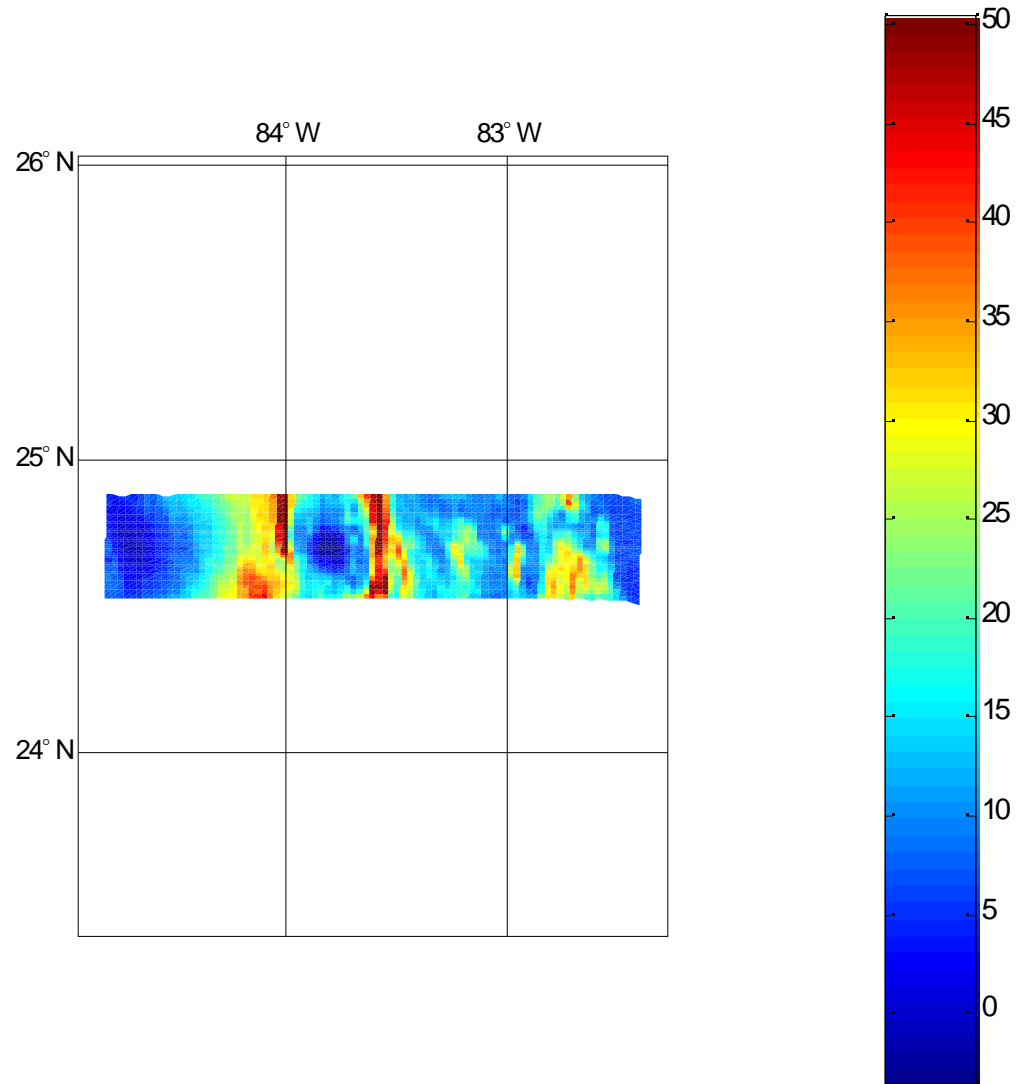


50.3 GHz brightness temperature(surface)

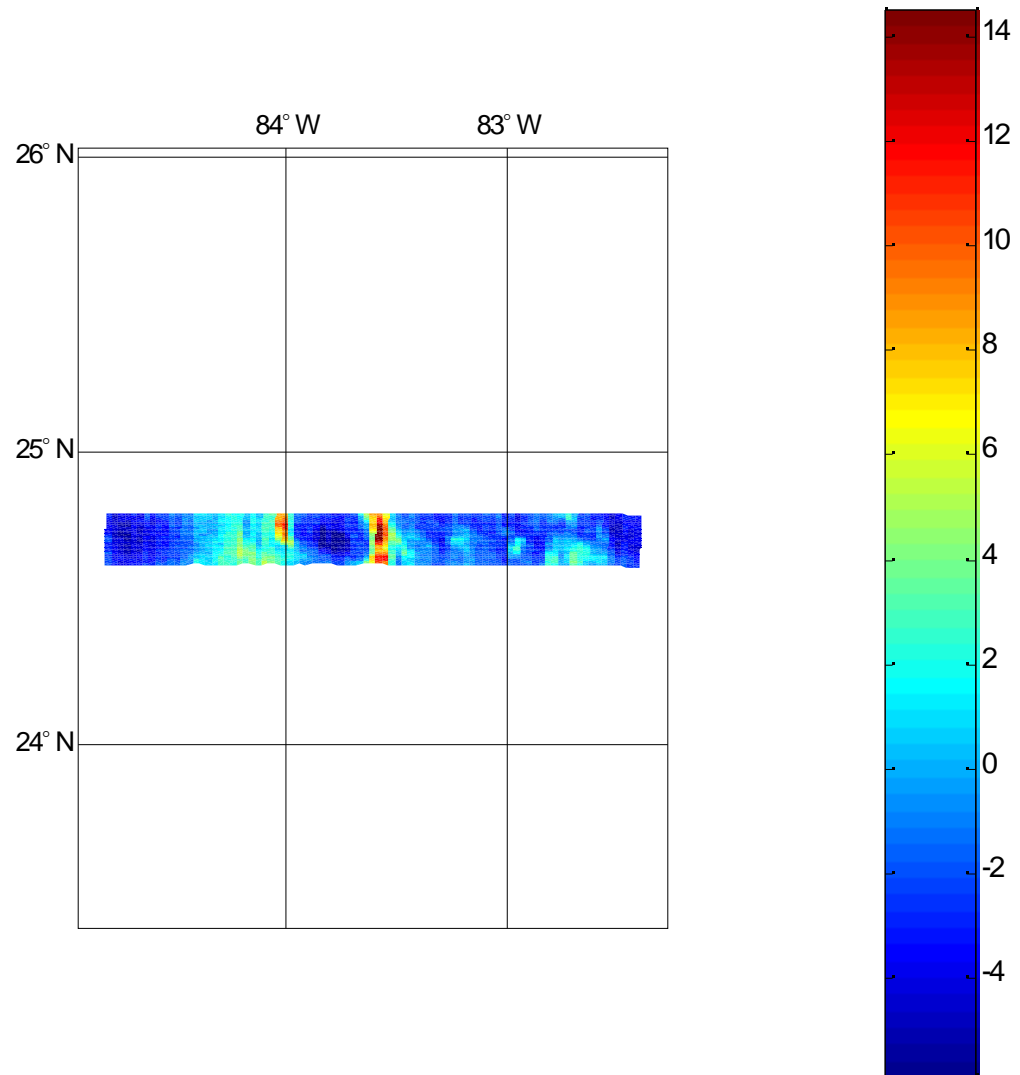
09-Jul-2005 14:45:04 - 15:03:18



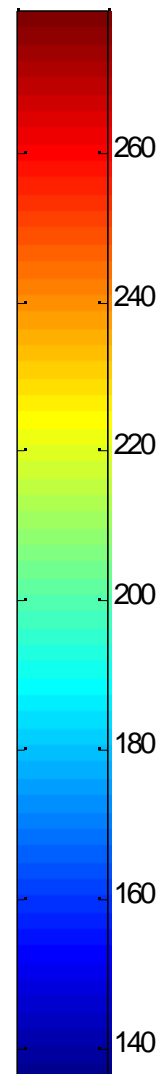
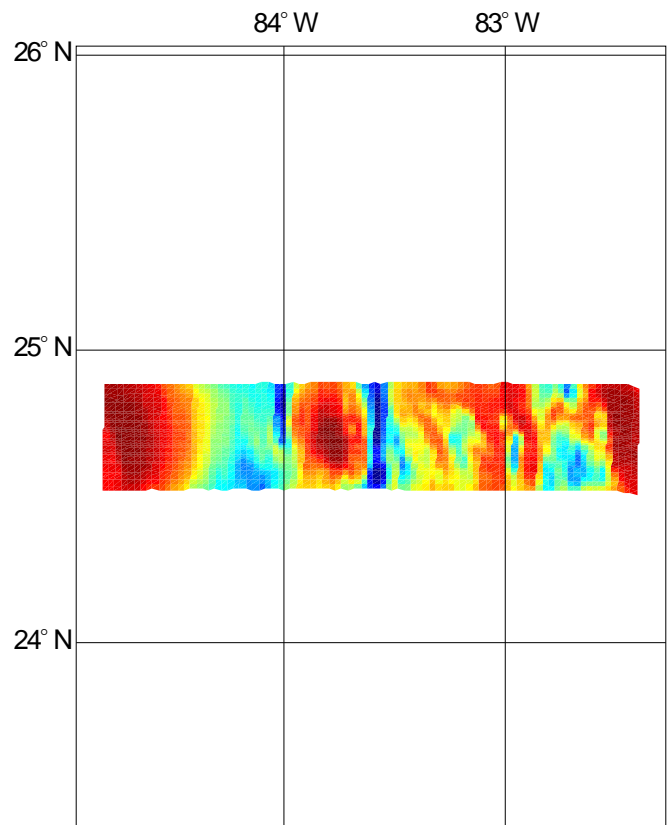
52.8-116.7 GHz brightness temperature difference(1000mB)
09-Jul-2005 14:45:04 – 15:03:18



54.94-117.95/119.55 GHz brightness temperature difference(250mB)
09-Jul-2005 14:45:04 – 15:03:18

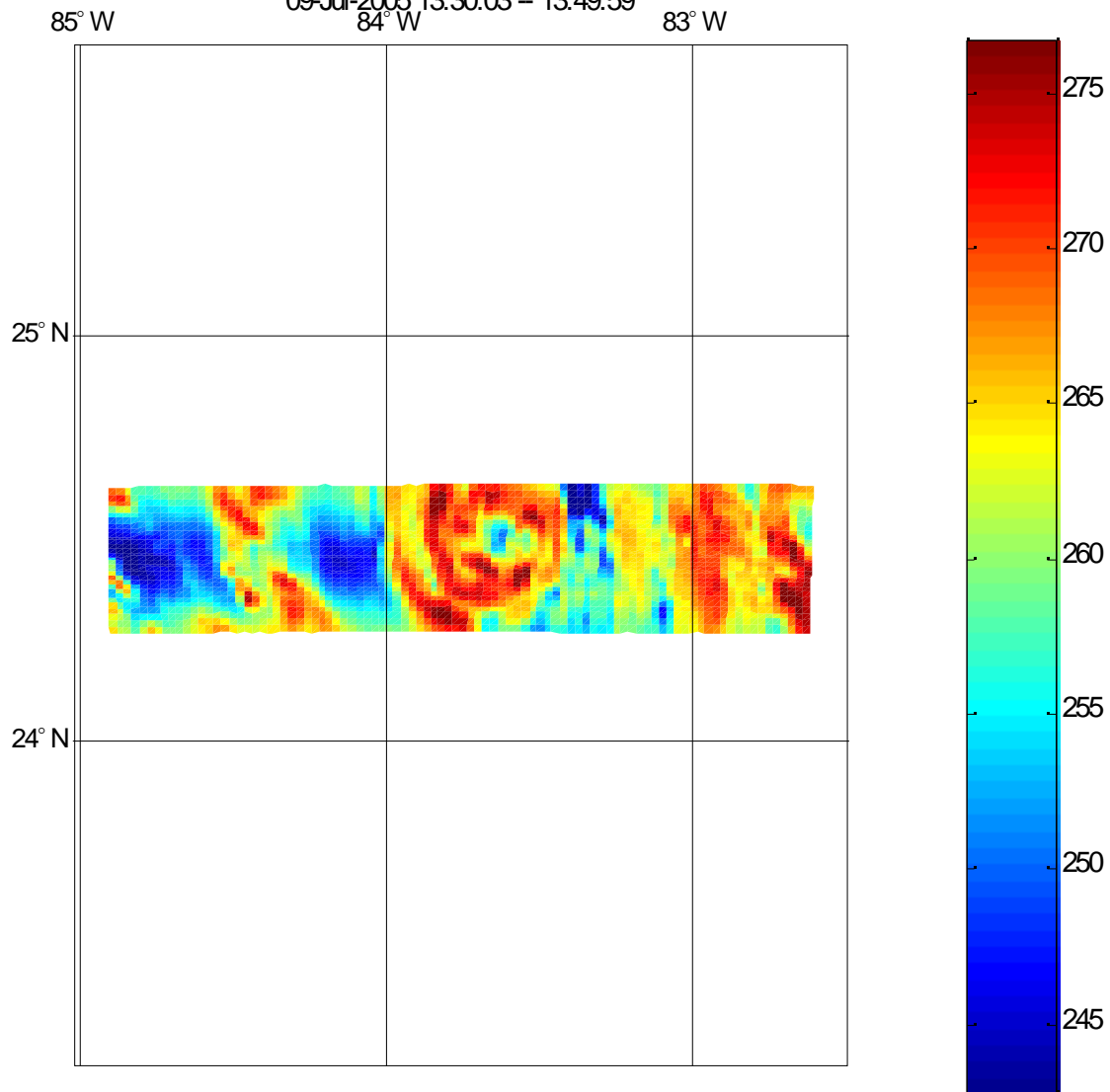


166 GHz brightness temperature
09-Jul-2005 14:45:04 – 15:03:18



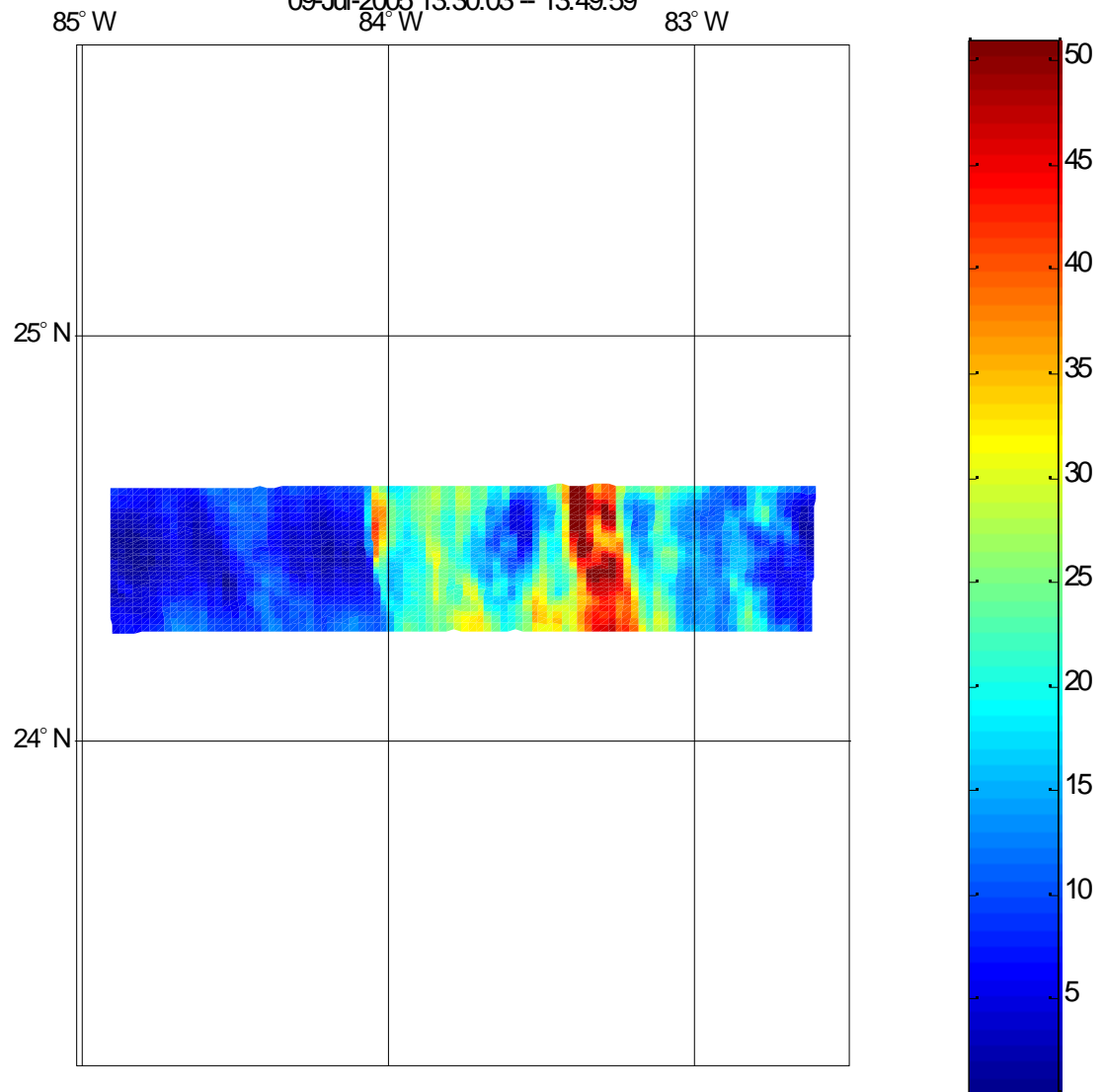
50.3 GHz brightness temperature(surface)

09-Jul-2005 13:30:03 - 13:49:59



52.8-116.7 GHz brightness temperature difference(1000mB)

09-Jul-2005 13:30:03 - 13:49:59



54.94-117.95/119.55 GHz brightness temperature difference(250mB)

09-Jul-2005 13:30:03 - 13:49:59

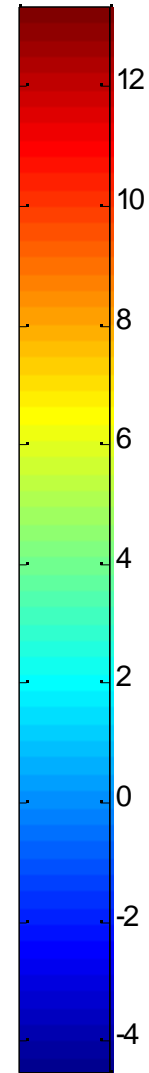
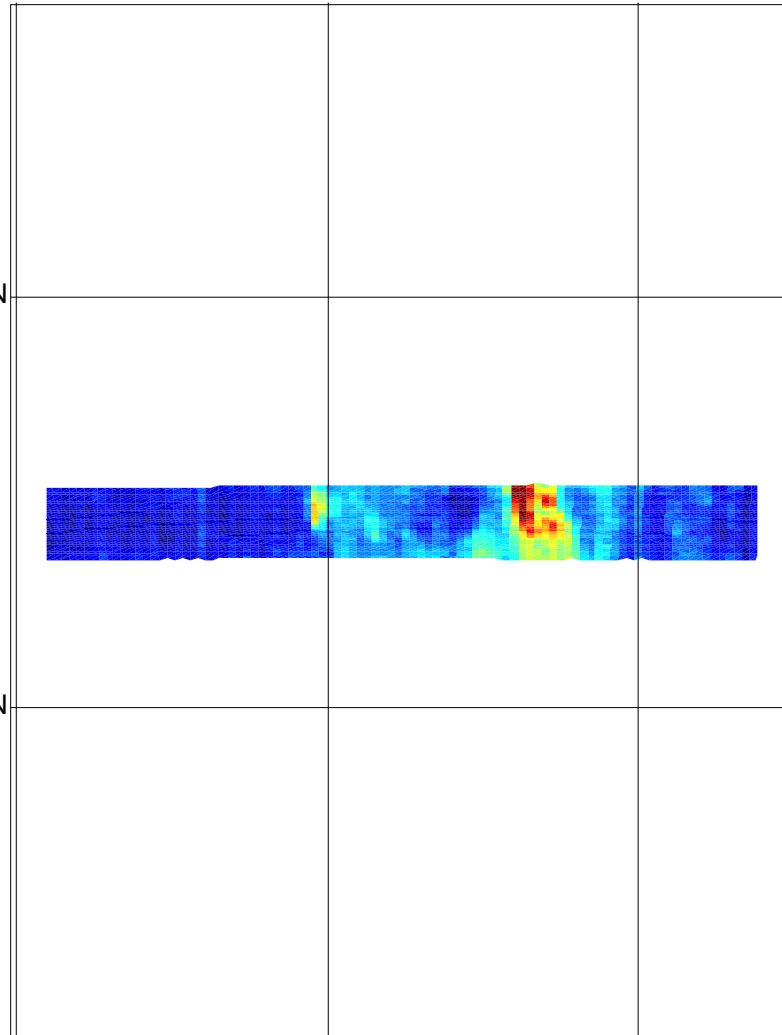
85° W

84° W

83° W

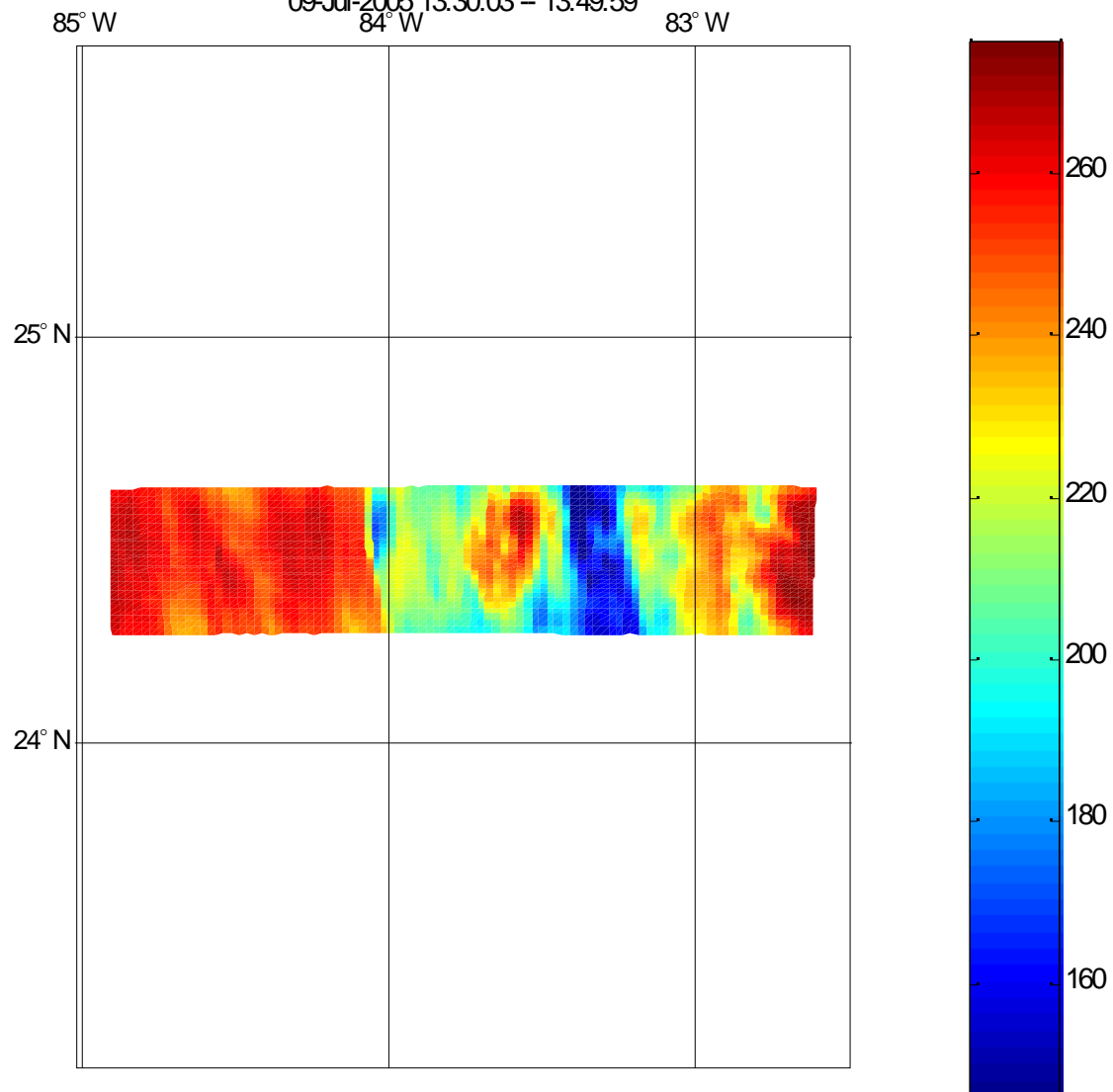
25° N

24° N

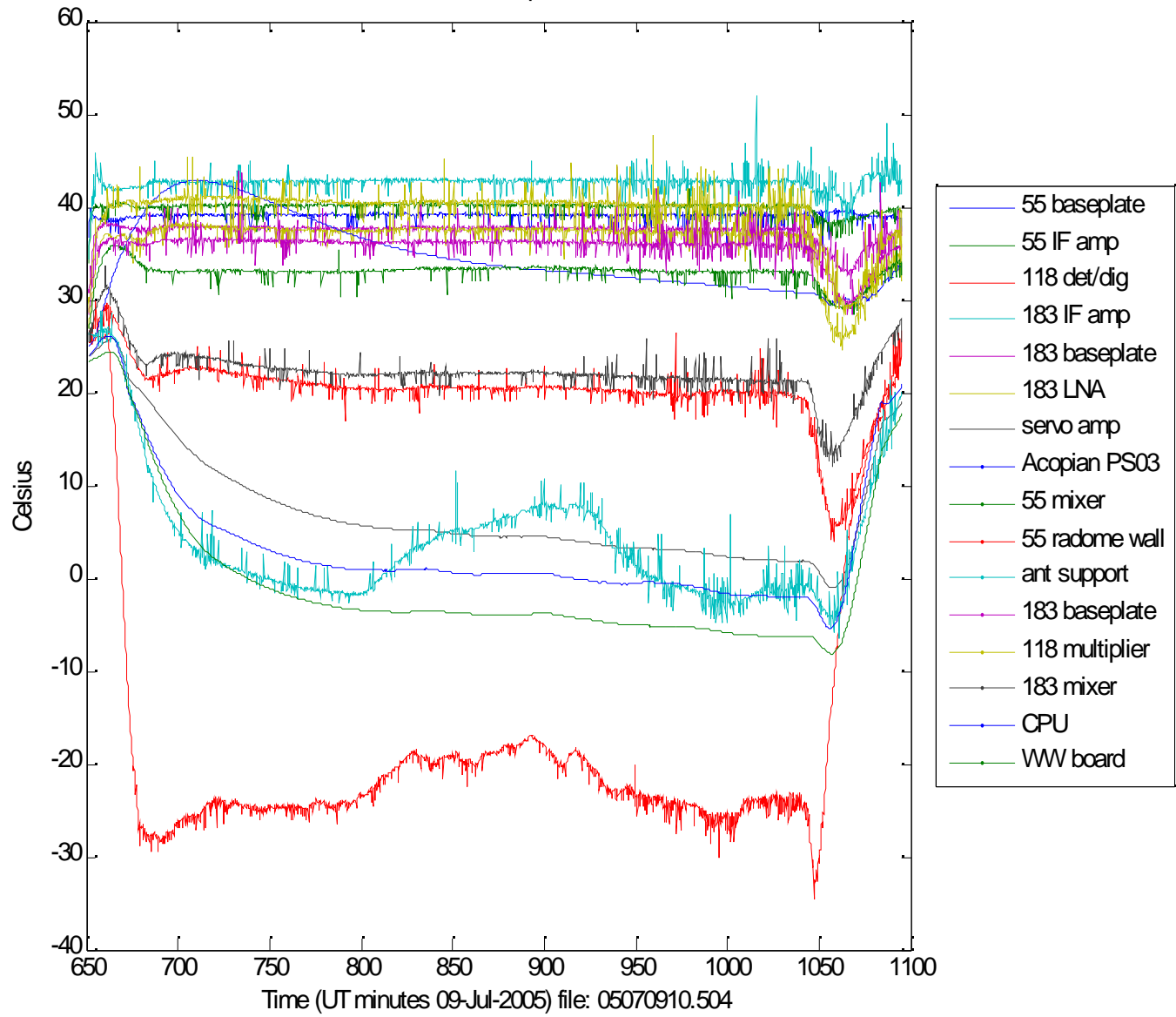


166 GHz brightness temperature

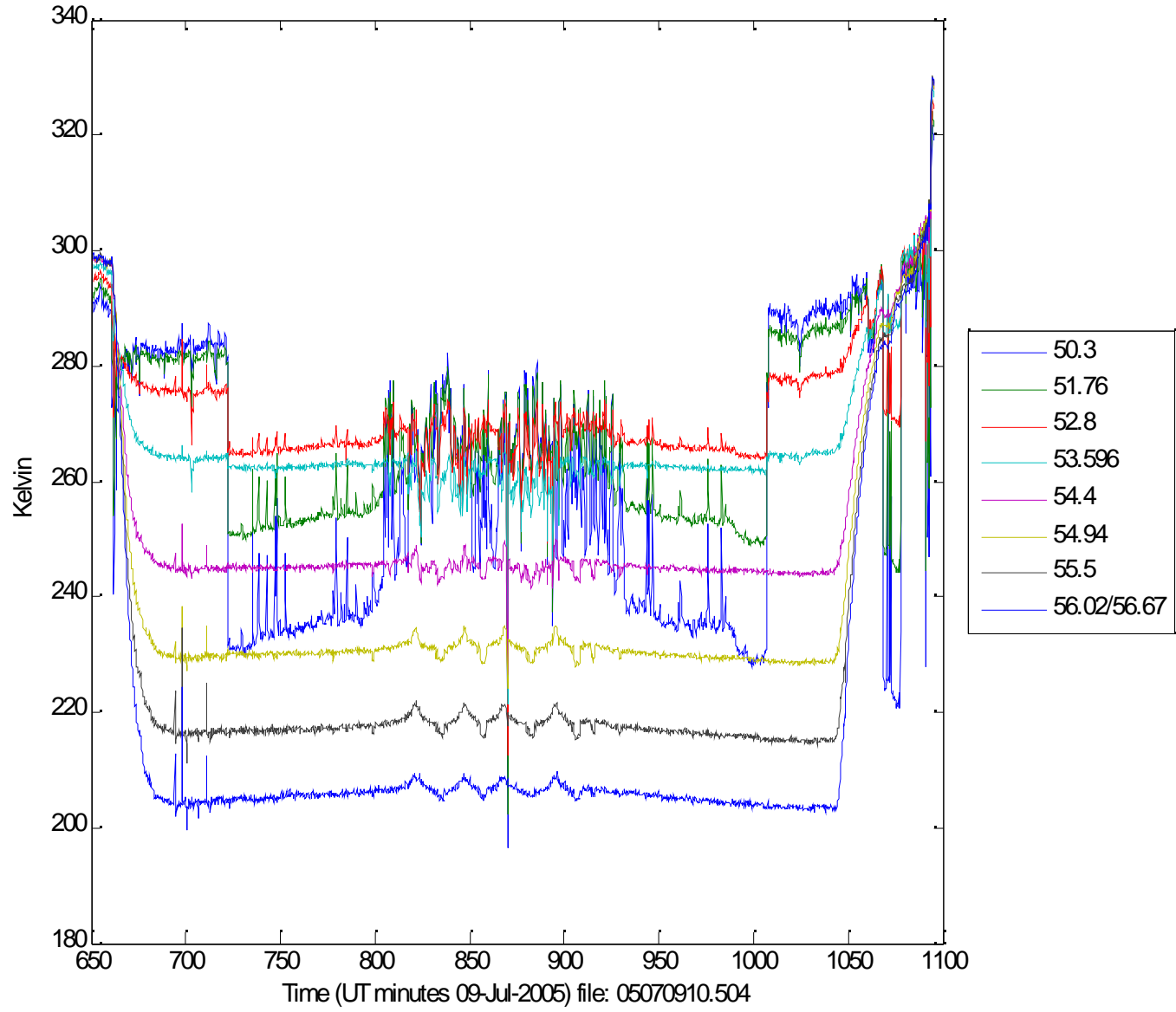
09-Jul-2005 13:30:03 - 13:49:59



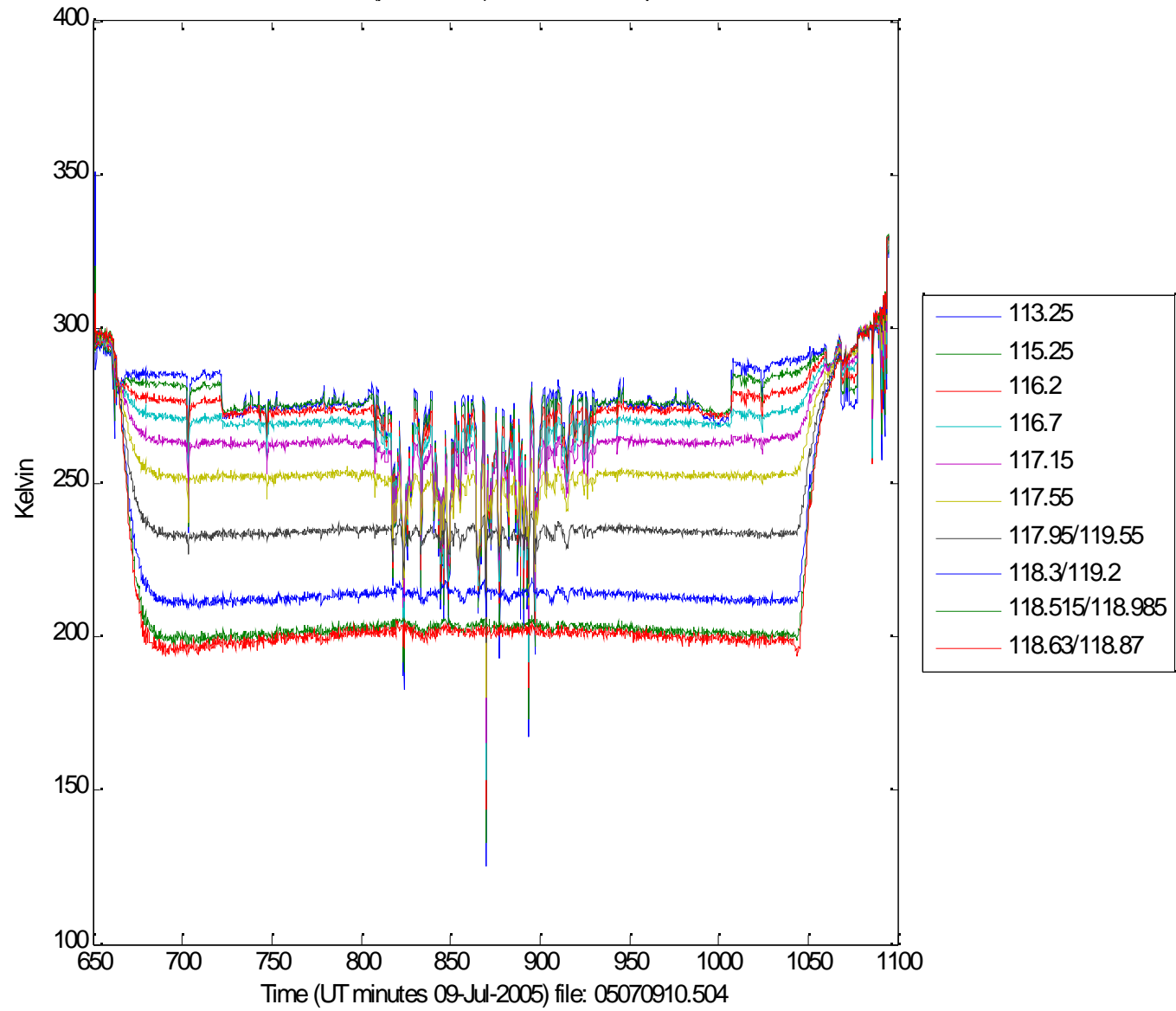
Instrument Temperatures



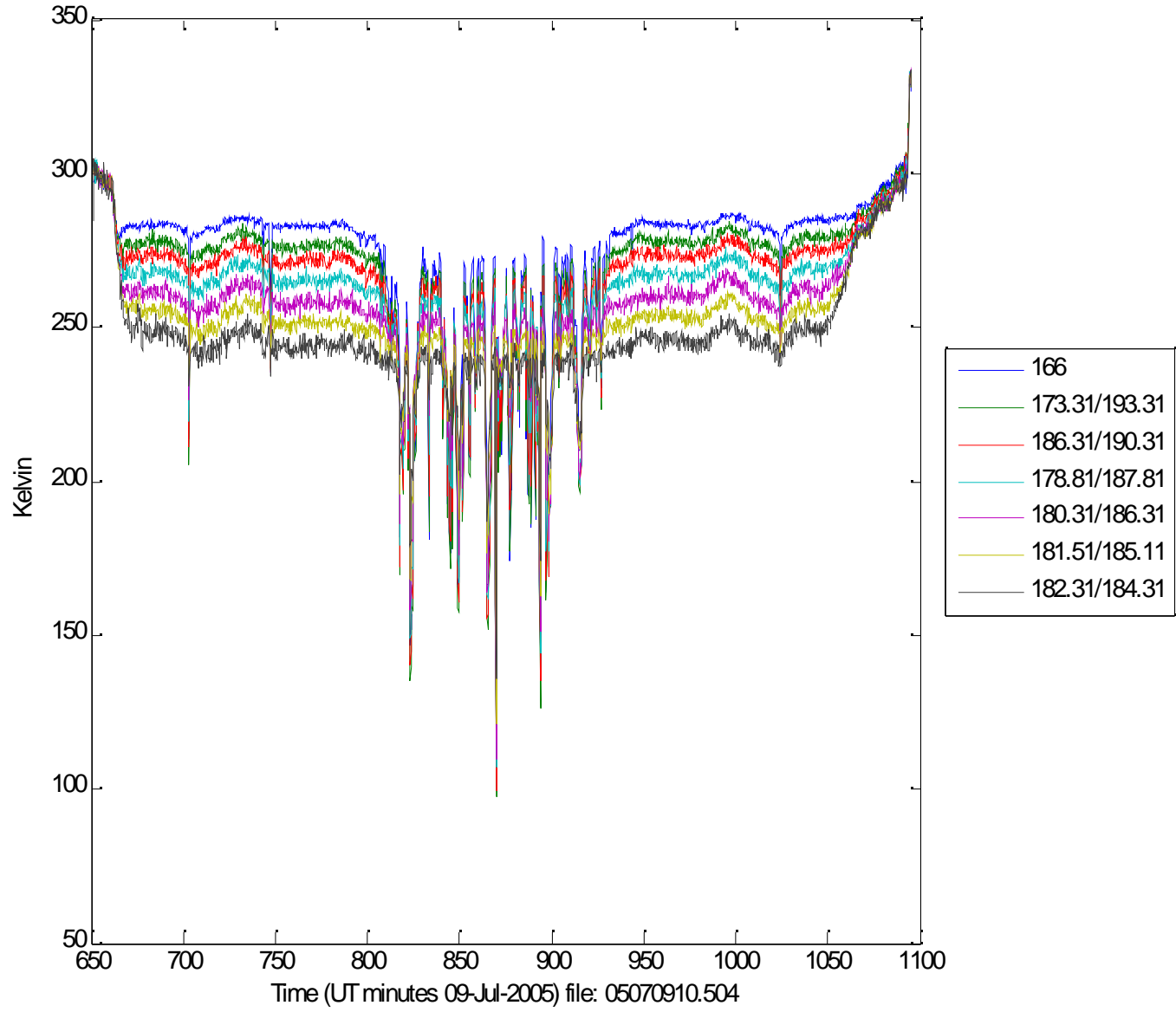
Nadir (pcenter=62) Radiometer Output



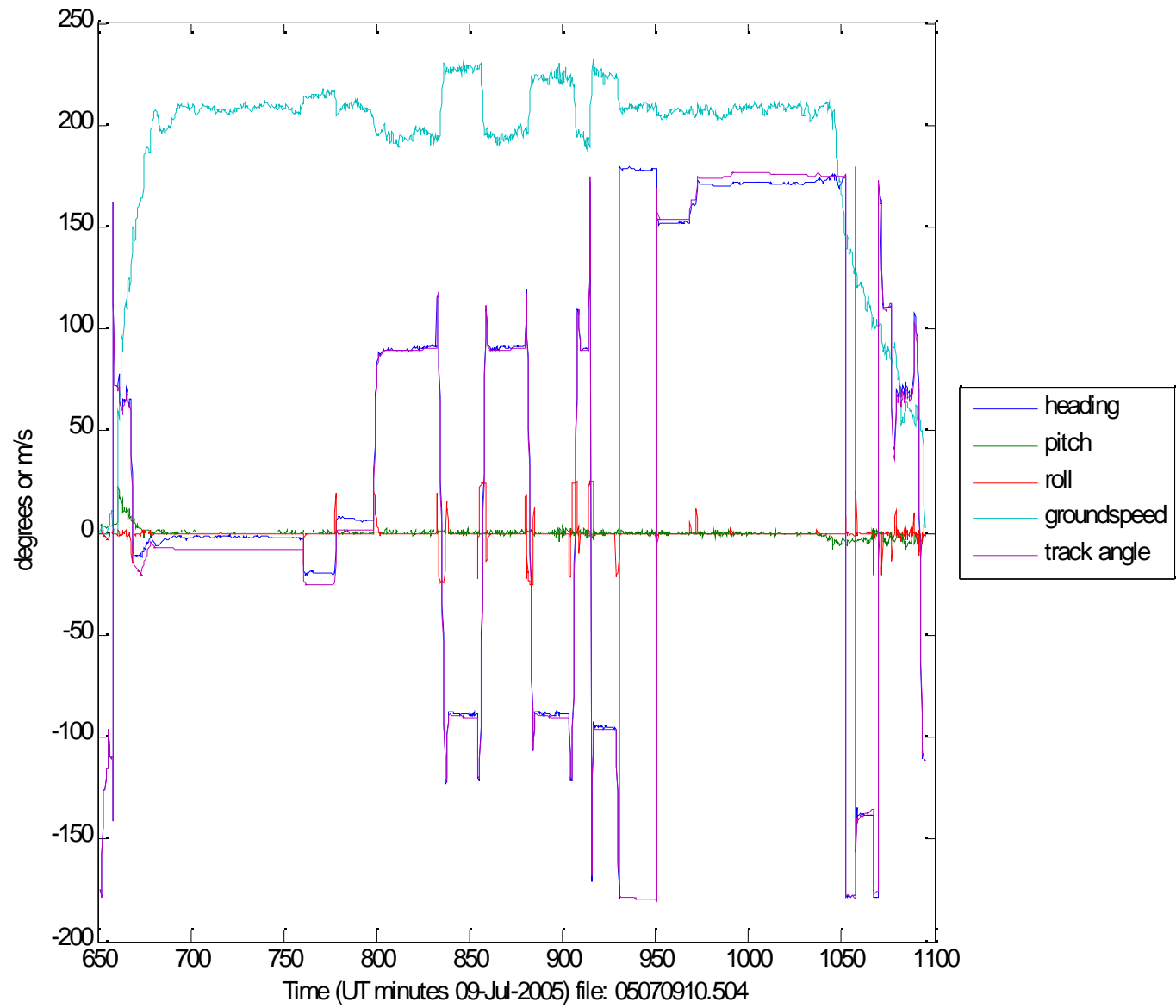
Nadir (pcenter=62) Radiometer Output



Nadir (pcenter=62) Radiometer Output



Other Nav Data



Hot Load (phot=10) Radiometer Output

