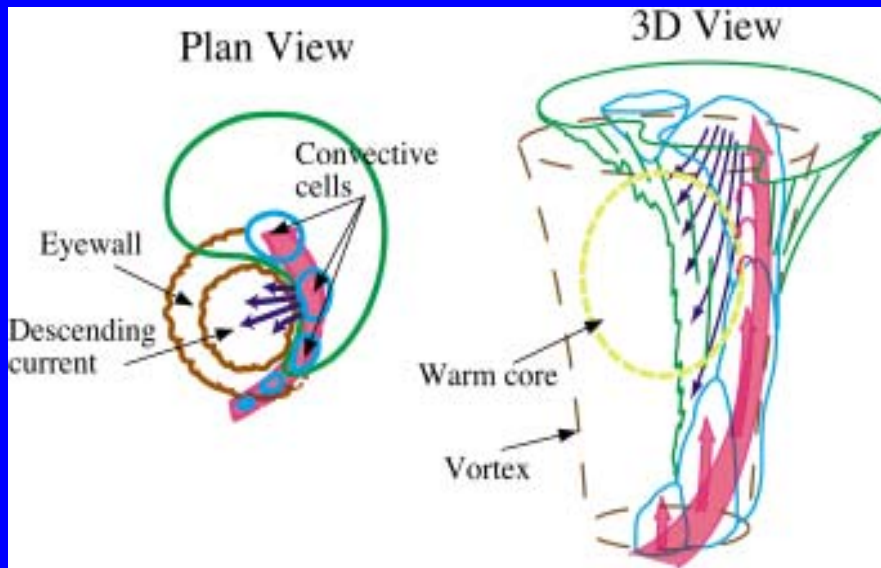
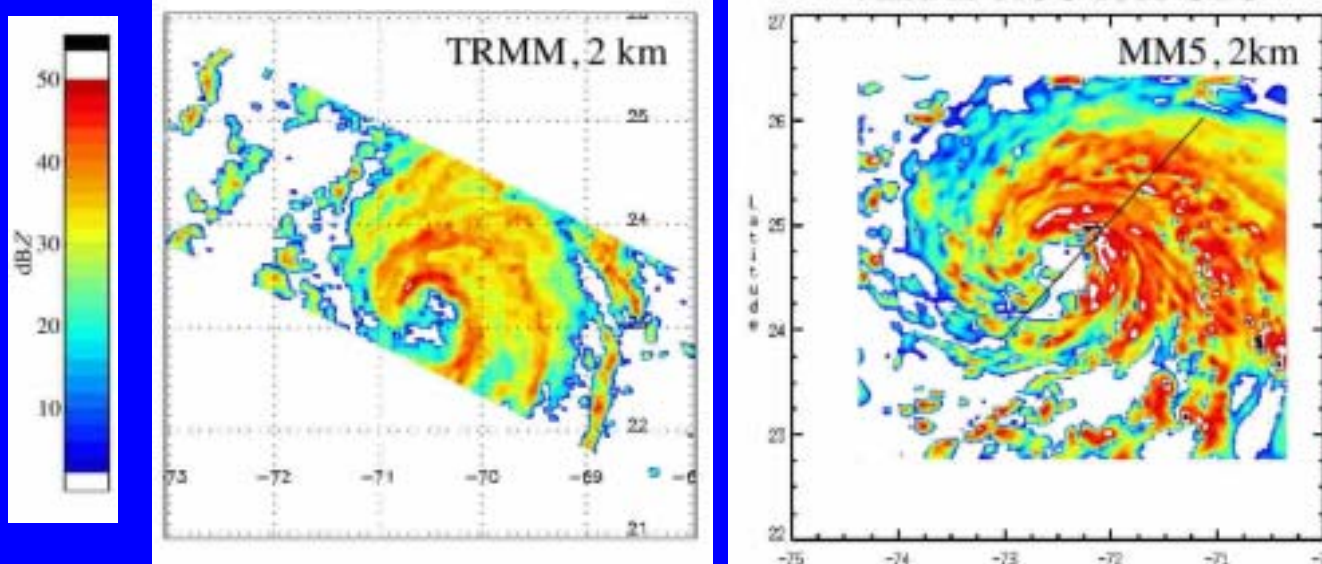




Simulation of Bonnie (1998)



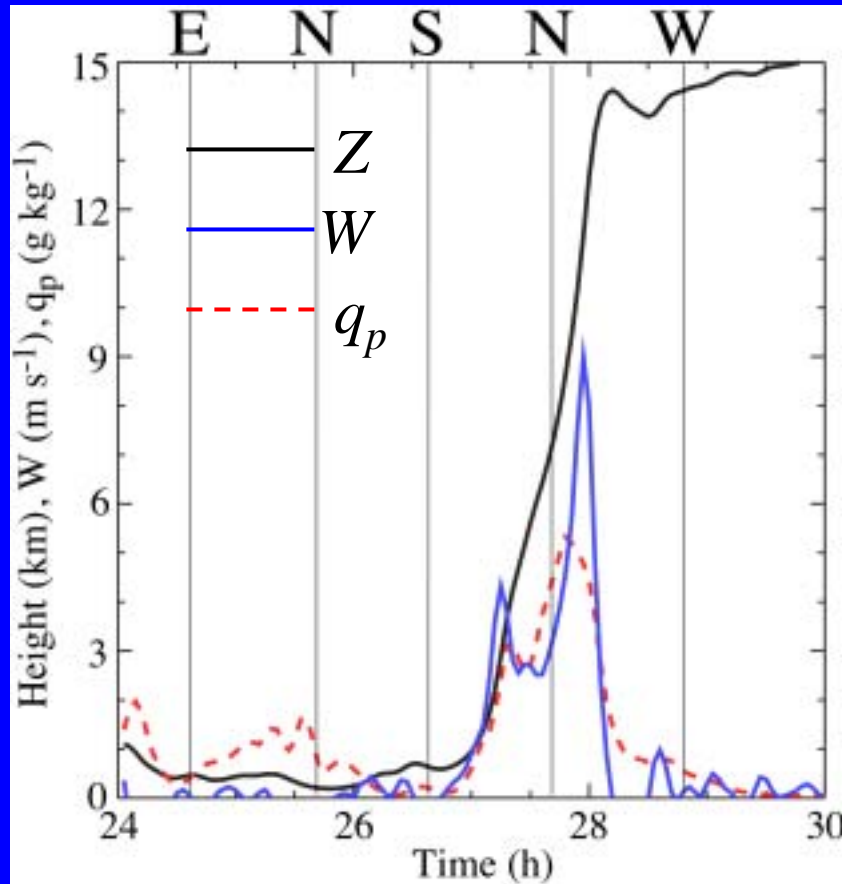
Above, right: 2-km grid simulation of Bonnie using MM5

Left: From Heymsfield et al. (2001)

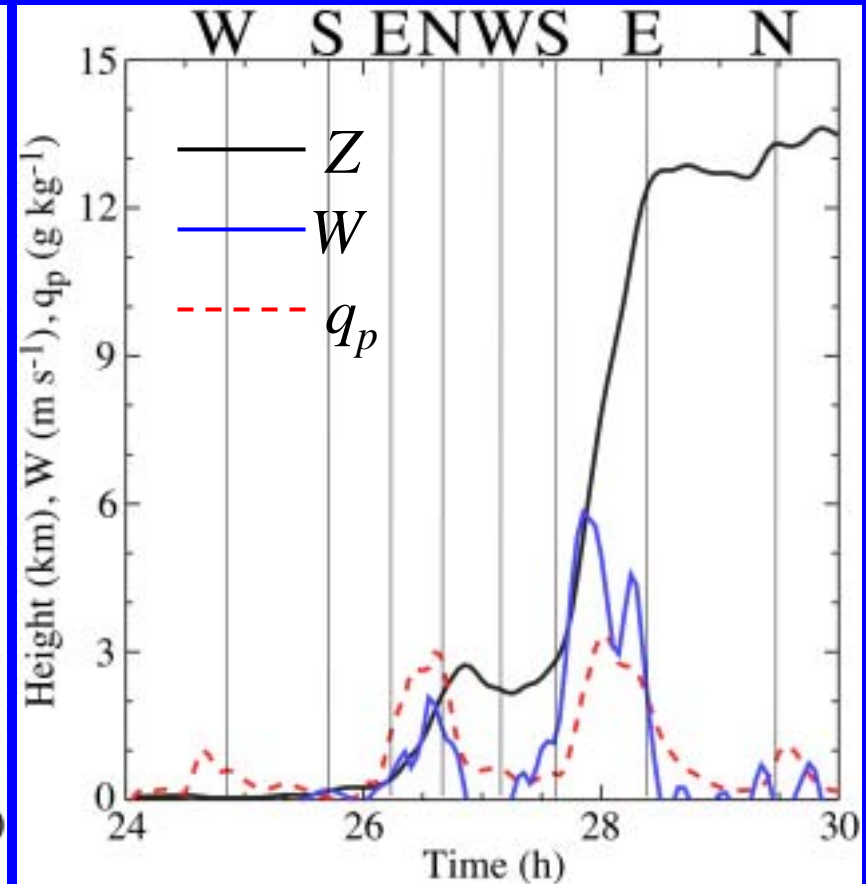


Two modes of trajectory motion

One-step Risers



Two-step Risers



E, N, W, S = east, north, west, south

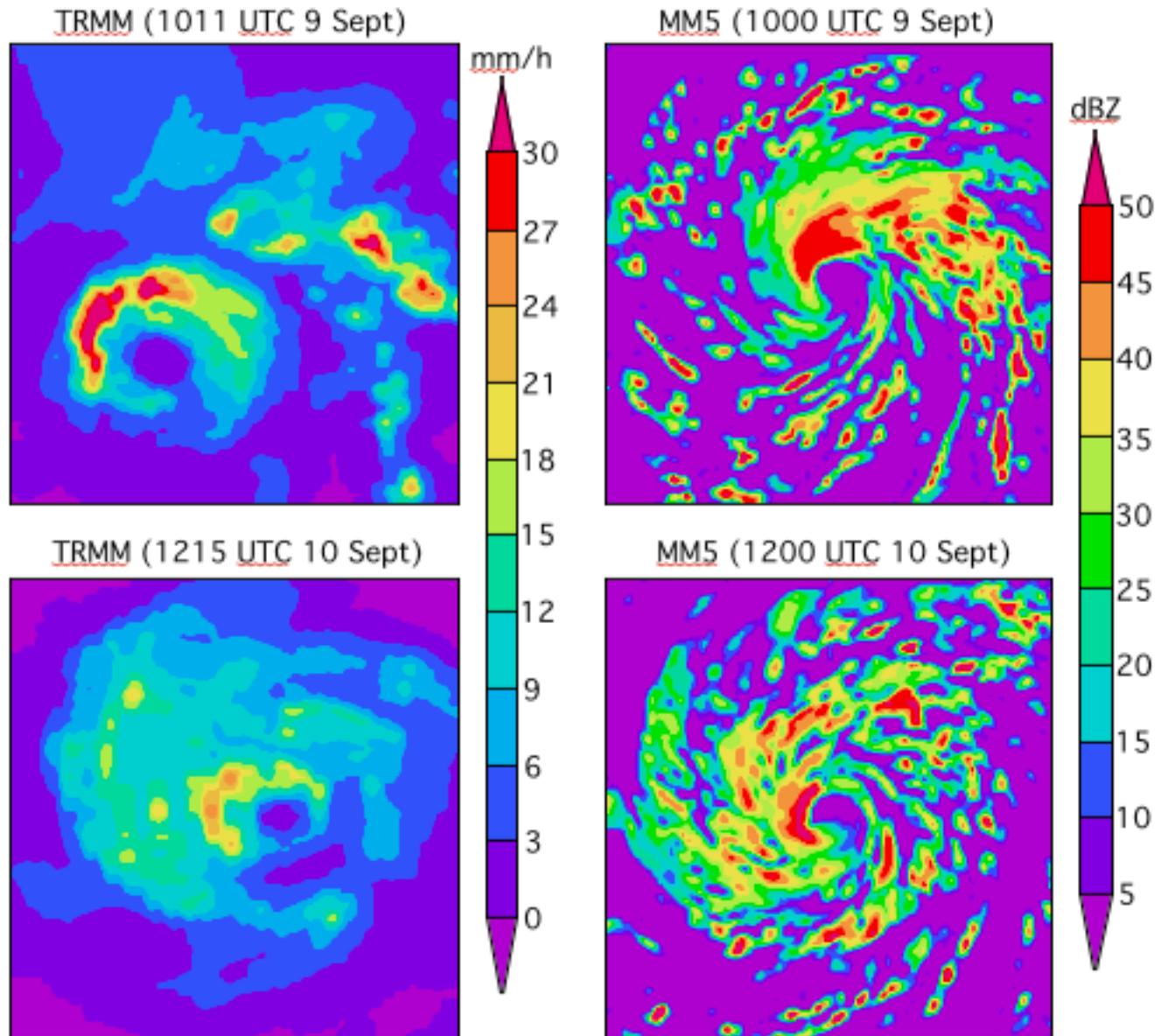
Z, W, q_p = trajectory height, vertical velocity, total precip



Simulation of Hurricane Erin (2001)

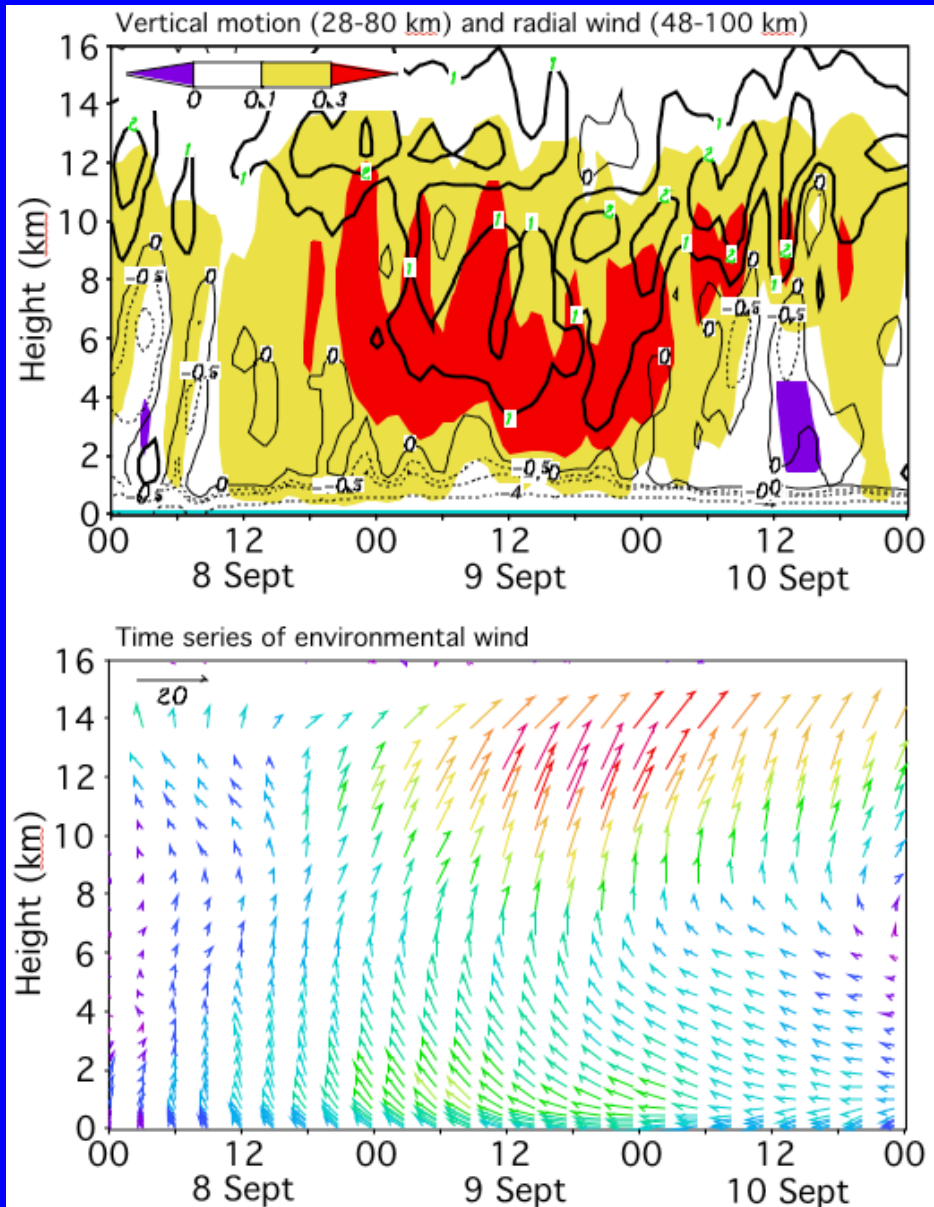
Simulation
conducted by
Liguang Wu,
UMBC/GEST

Each plot
shows a 400 x
400 km area





Evolution of Erin and Relationship to Shear



Time series of azimuthally avg. W, U

Time series of “environmental” wind profiles (winds avg. over a 300-km radius circle centered on storm)