

GHRC UWG LOGISTICS



Sherry Harrison

GHRC UWG Co-Chairperson

sharrison@itsc.uah.edu

Presented at the GHRC User Working Group Meeting
September 25-26, 2014

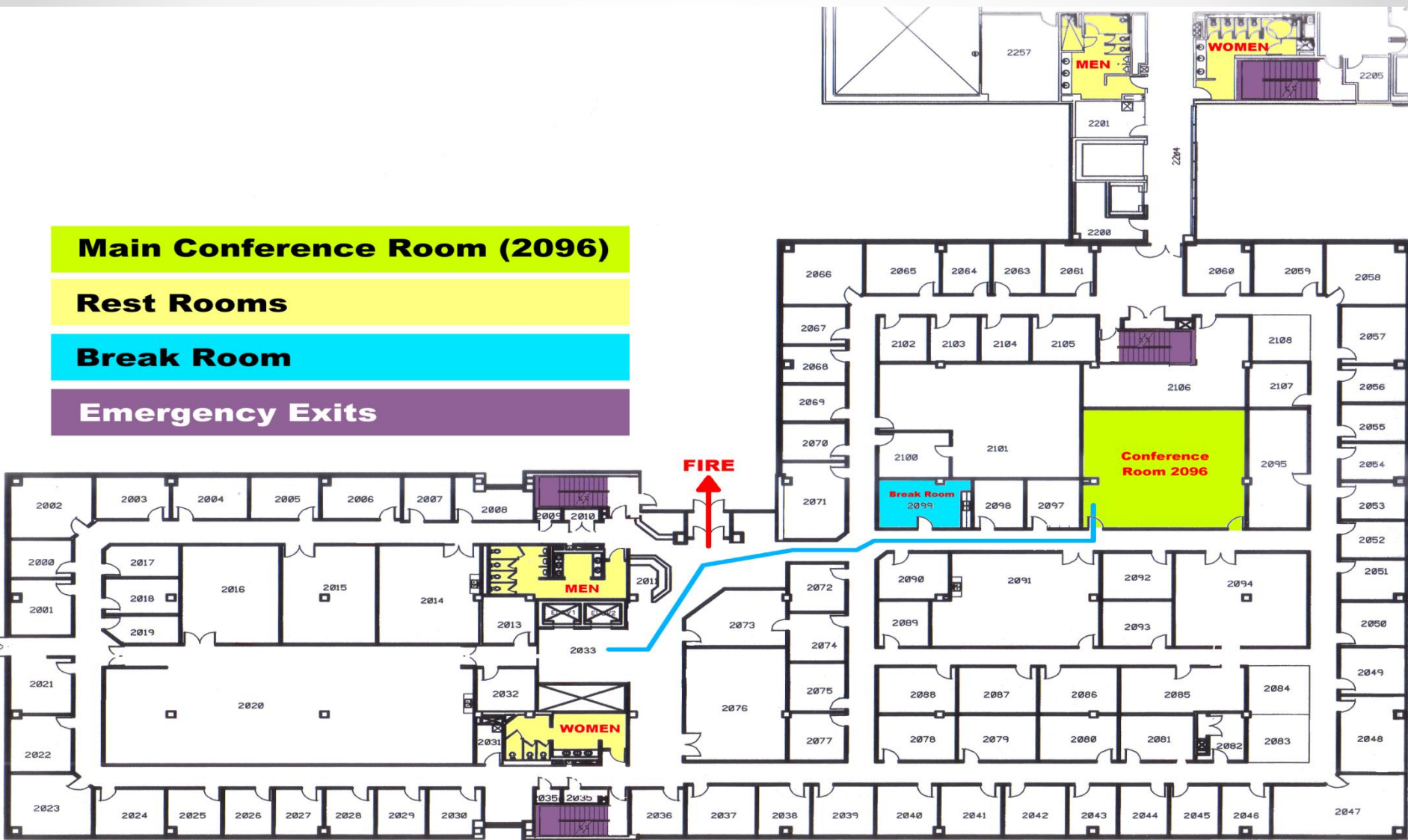


Main Conference Room (2096)

Rest Rooms

Break Room

Emergency Exits



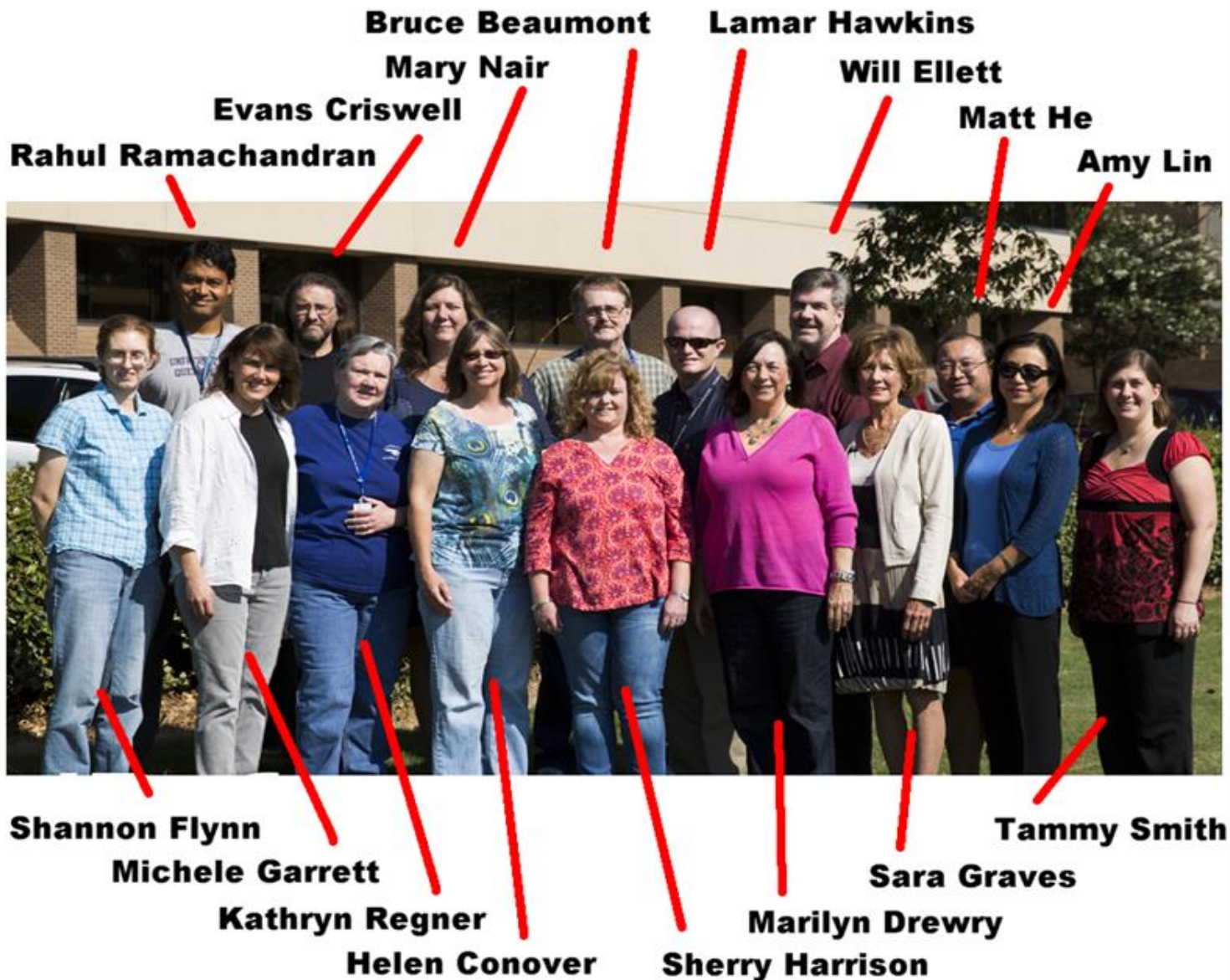
NSSTC SECOND FLOOR

Wireless Network Access

Network: nasaguest

User Name: ghrc.conf

Password: Rlt2zOkk



Please contact **GHRC User Services** for any help
or questions ghrcdaac@itsc.uah.edu

Agenda – Day 1

0800 - 0830	<i>Coffee; Meet and Greet</i>	
0830 - 0845	GHRC Welcome UAH welcome	Ramachandran Graves
0845 - 0945	Opening Comments <ul style="list-style-type: none"> • Meeting Overview & Logistics • View from HQ • View from ESDIS 	Harrison Kakar Berrick
0945 - 1030	GHRC DAAC Overview Presentation <ul style="list-style-type: none"> • Management & Organization • Vision DISCUSSION	Conover Ramachandran
1030 - 1100	<i>Break - SPoRT Tour</i>	Zavodsky
1100 - 1200	Infrastructure <ul style="list-style-type: none"> • Hardware and Processing Automation • Data Search, Access and Order Tools DISCUSSION <ul style="list-style-type: none"> • Web presence DISCUSSION	Ellett, Beaumont Harrison Smith, Flynn
1200 - 1300	<i>Working Lunch</i>	
1300 - 1430	Data and Related Tools <ul style="list-style-type: none"> • Satellite and Airborne Microwave Sensors <ul style="list-style-type: none"> ○ Data overview ○ Regional Air Sea Interactions Tool DISCUSSION <ul style="list-style-type: none"> • Field Campaigns <ul style="list-style-type: none"> ○ Data overview <ul style="list-style-type: none"> ▪ Hurricane Science ▪ GPM Ground Validation ○ Mission Coordination Portal ○ HS3 Data System DISCUSSION	Drewry Keiser Bugbee Hawkins He Maskey
1430 - 1500	<i>Break</i>	

Agenda – Day 1 (cont'd)

1500 - 1700	<p>UWG Member presentations (10 minutes each)</p> <p>Microwave Research</p> <ul style="list-style-type: none"> Assessing Global Water and Energy Budgets Merging retrievals for passive microwave imagers and sounders <p>Lightning Research</p> <ul style="list-style-type: none"> Lightning research at MSFC Monitoring the performance of space-based optical lightning sensors Multi-sensor data workflows for lightning science <p>Hurricane Science</p> <ul style="list-style-type: none"> Global distributions of various types of precipitation systems from radar and passive microwave observations The Cyclone Global Navigation System (CYGNSS) Earth Venture Mission Contributions of GHRC datasets to the Zipser Tropical Convection Research Group <p>GPM Ground Validation</p> <ul style="list-style-type: none"> GPM Field Campaigns <p>Applications</p> <ul style="list-style-type: none"> Integration of Earth Science Research and Education at UAH SPoRT/MSFC Applied Science: Disaster Activities 	<p>Kummerow Duncan</p> <p>Blakeslee Buechler</p> <p>Bruning</p> <p>Liu</p> <p>Ruf</p> <p>Zawislak</p> <p>Wolff</p> <p>Griffin</p> <p>Molthan</p>
1700-1730	Summary, Actions and Wrap-up	Ramachandran
1730	<i>Adjourn</i>	
1830	<i>Group Dinner - 1892 East</i>	