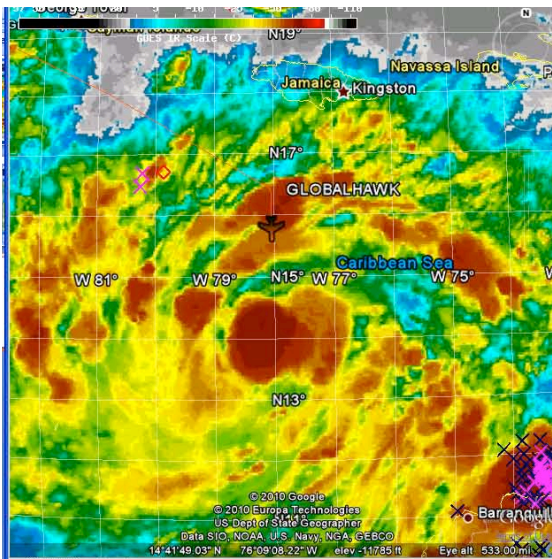
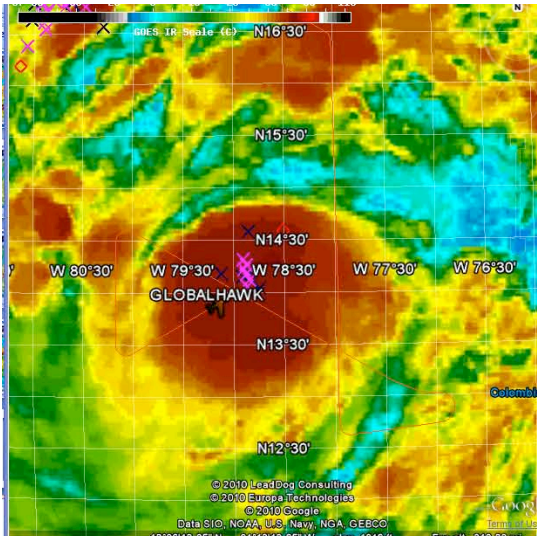


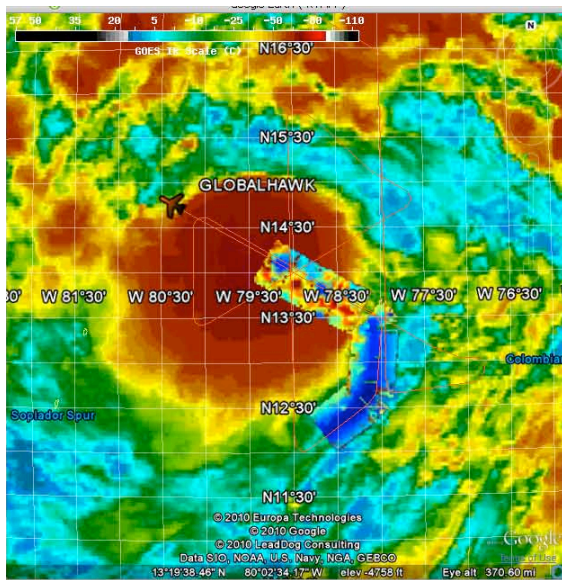
(Above) The GH on approach prior to turn south toward the rapidly growing CB near 78.0°W, 14.0°N.



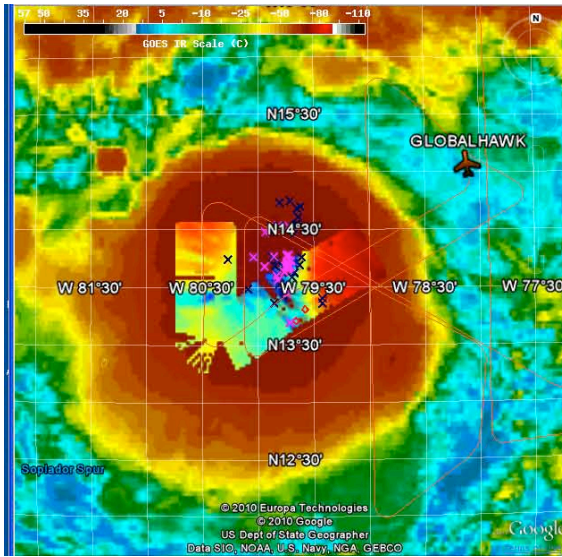
(Above) GH has begun the first N-S leg as the CB continues to grow.



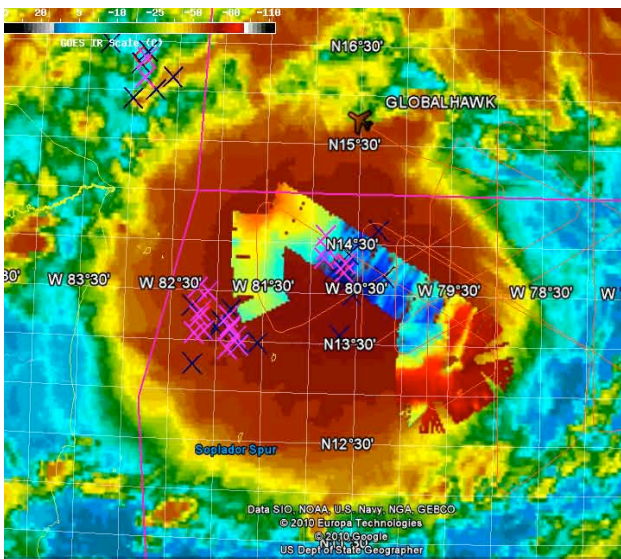
(Above) GH approaching active lightning area during first SW-NE pass (the third leg of the first butterfly pattern). HAMS data was not available in RTMM up through this time.



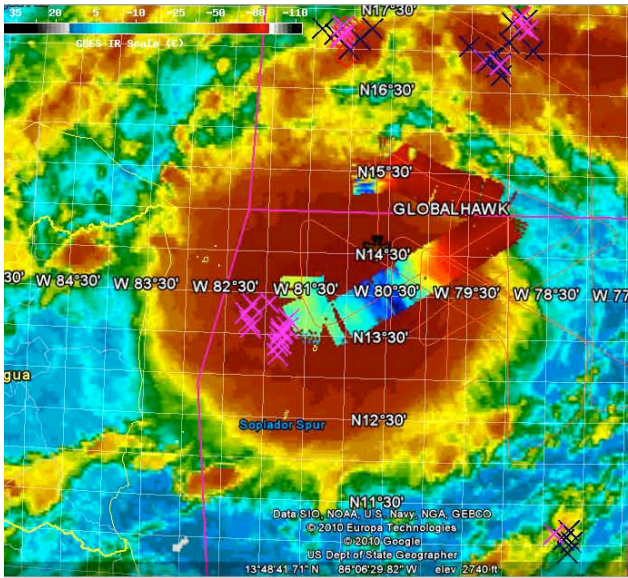
(Above) The GH is doing the second SE-NW pass. HAMS data now available in RTMM. It suggests a possible center (blue area at NW end of HAMS data; red area surrounding it may be precipitation in a nascent eyewall).



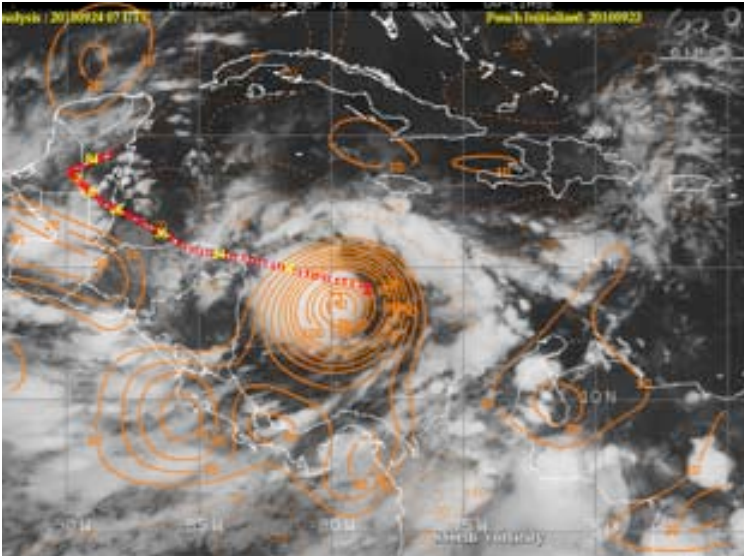
(Above) GH completing the second butterfly pattern after passing by a very active convective area.



(Above) HAMS R data suggests precipitation bands under cold cloud tops. NHC center is on east side of cloud shield, so precipitation is mostly downshear on west side of storm. The GH is about to begin a southward leg to resample this precipitation area.



(Above) The GH is heading south into precipitation area. The GH turns around and heads northward along the same track after moving south of 14°N.



(Above) CIMSS vorticity plot indicates a center near the eastern edge of cloud shield.