

WEATHER BRIEFING (MAY 9, 2011)



Overview

- Deja Vu all over again as far as the waiting game is concerned.
- For the next two days, large scale forcing for ascent will be minimal, meaning that the primary mechanism for breaking the capping inversion will be dry line circulations.
- The latest model guidance suggests stronger vorticity advections by late Wednesday into the MC3E area.

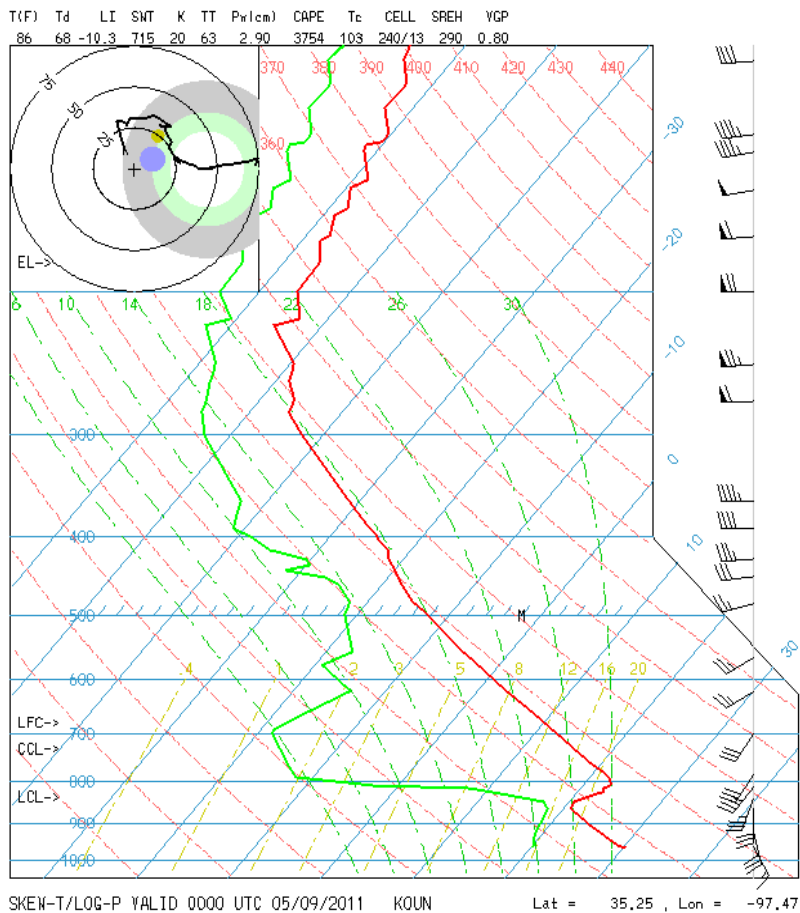
Satellite imagery

- <http://www.weathertap.com>

Soundings at OUN

Sounding valid 00Z 09 May

Sounding 12Z 09 May



Upper-Air Analyses

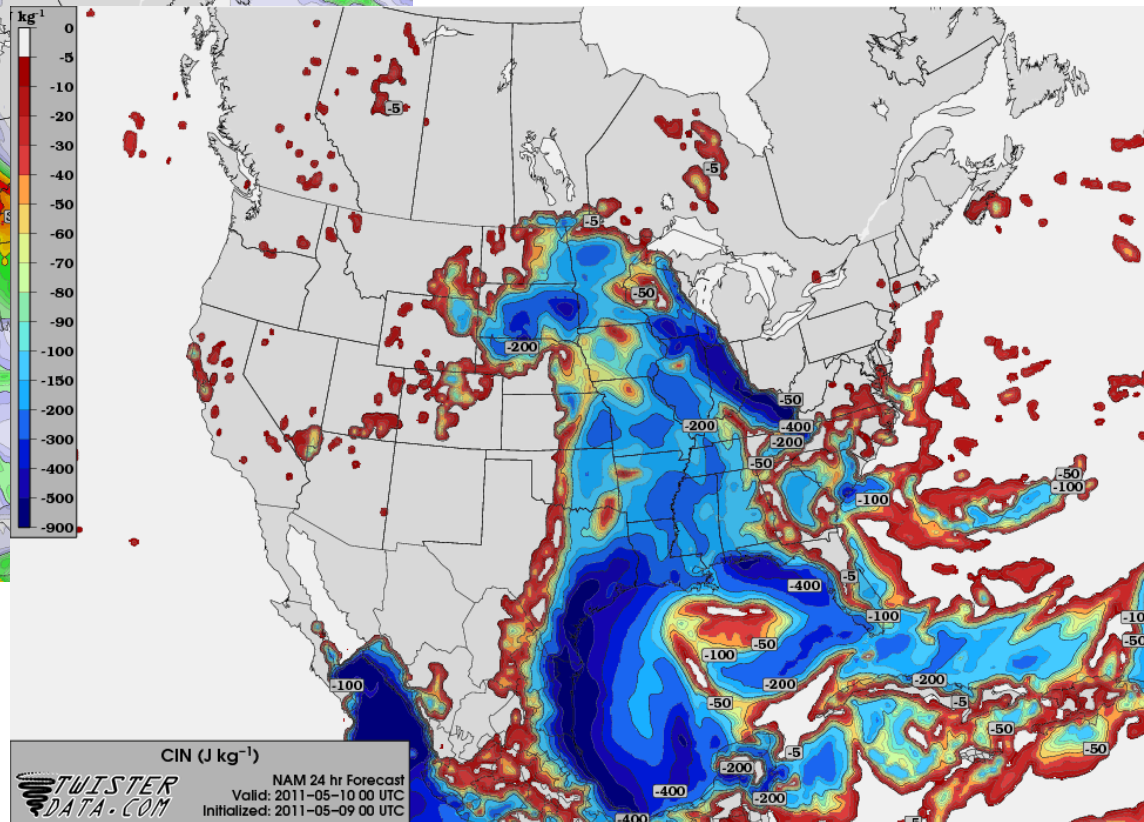
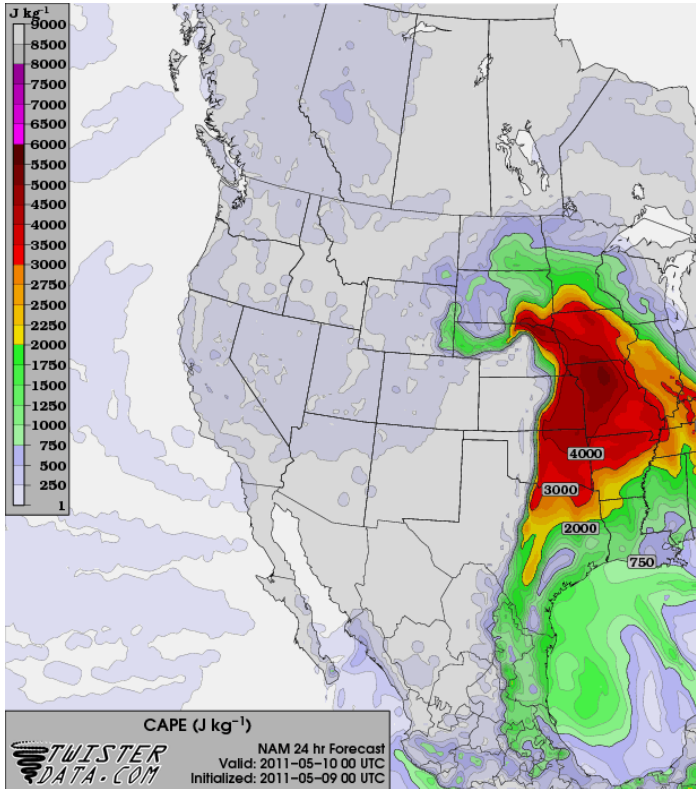
- <http://www.ral.ucar.edu/weather/upper/>

Surface Analysis

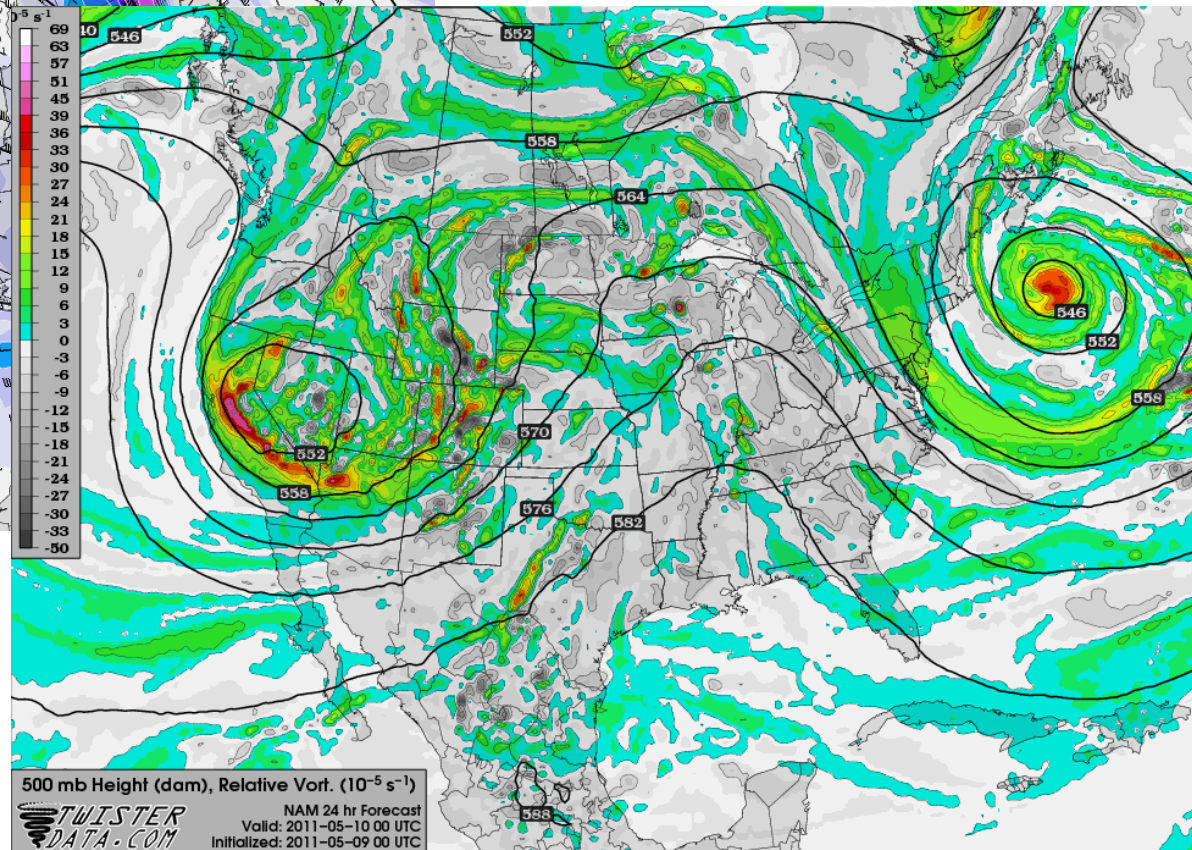
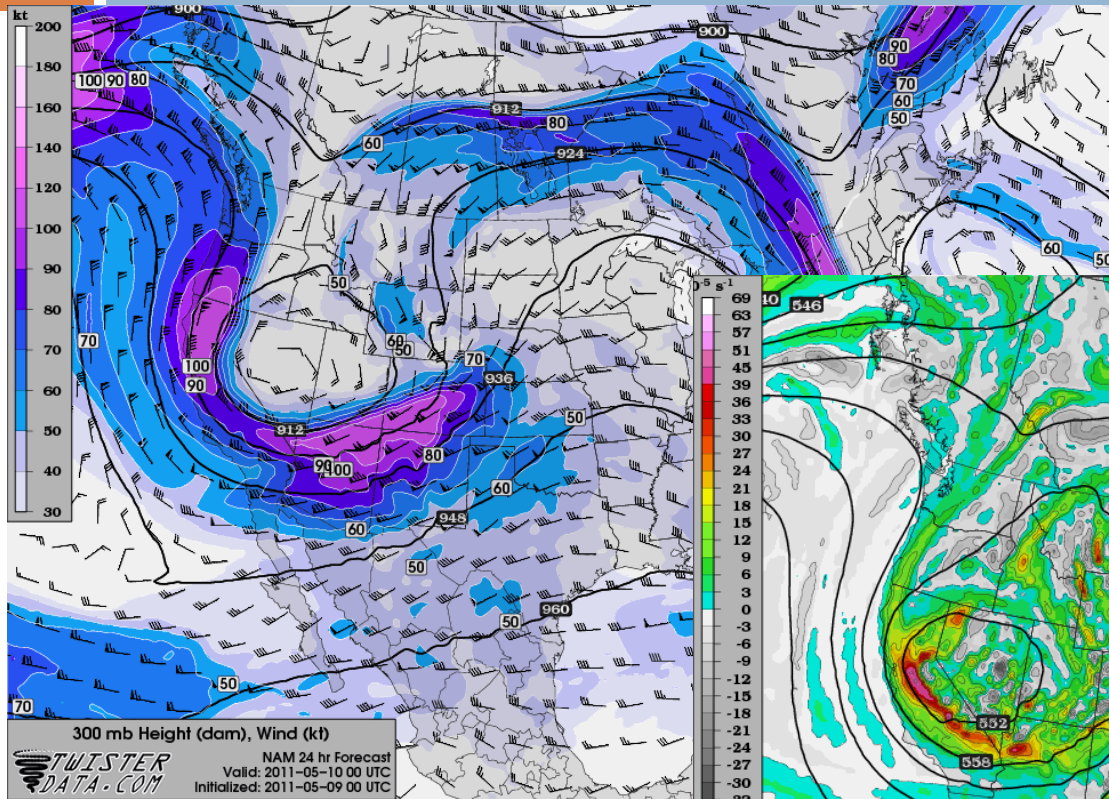
- <http://www.ral.ucar.edu/weather/surface/>

00Z Tuesday (May 10th)

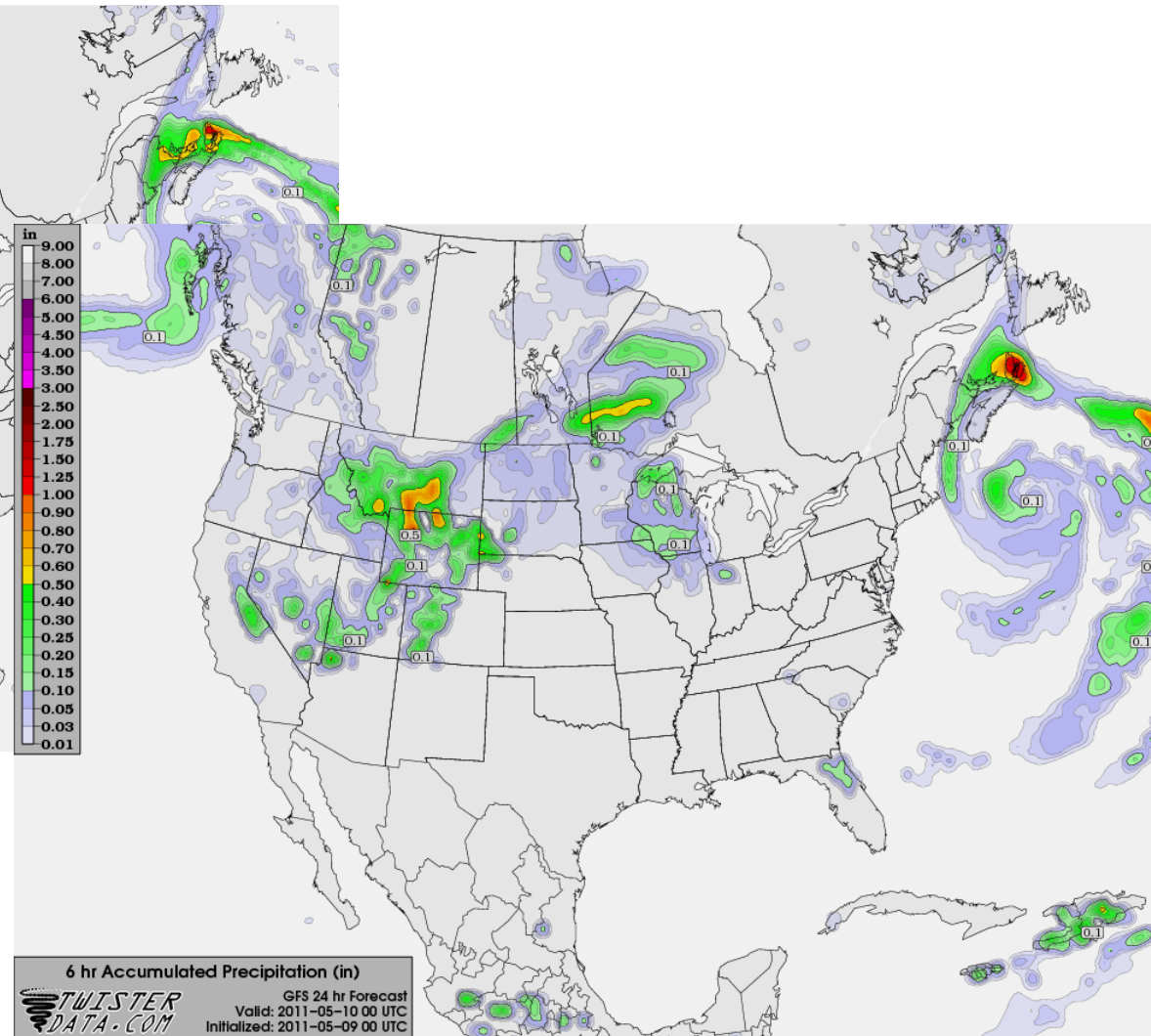
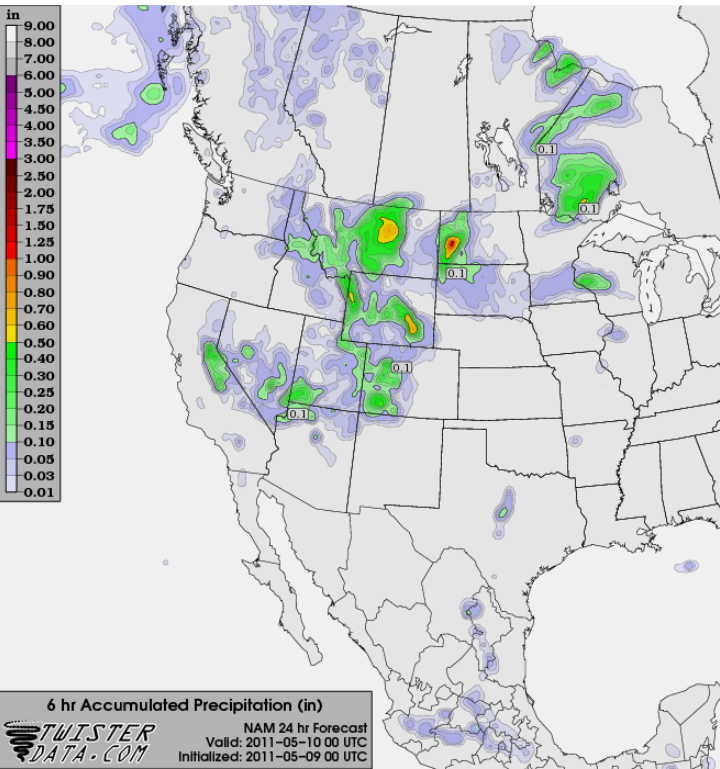
Instability/Convective Inhibition



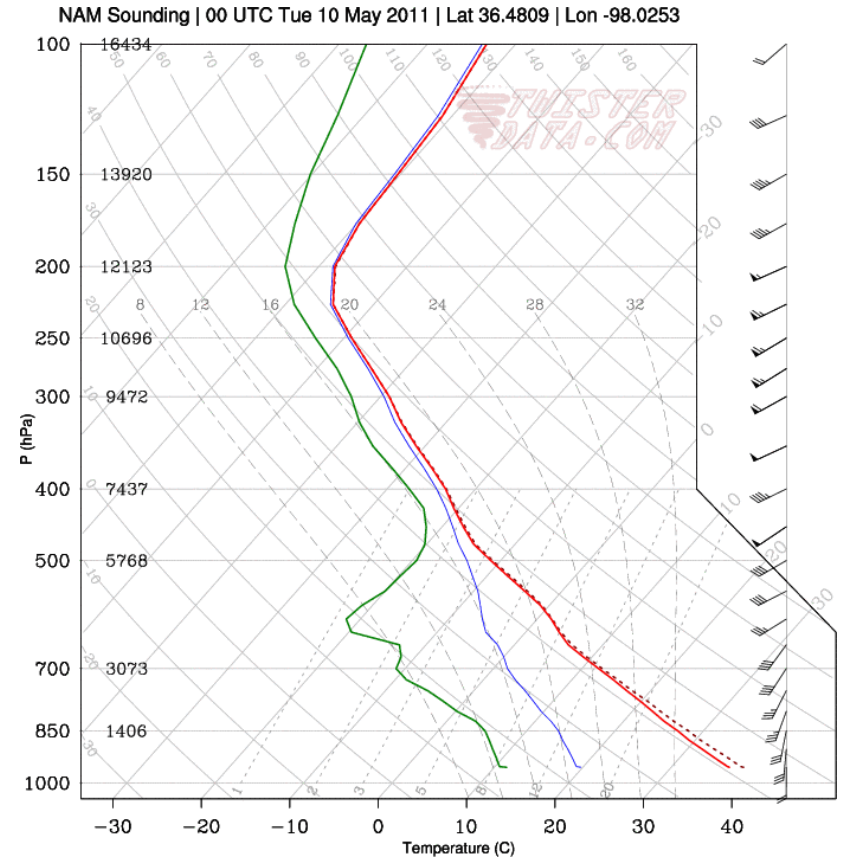
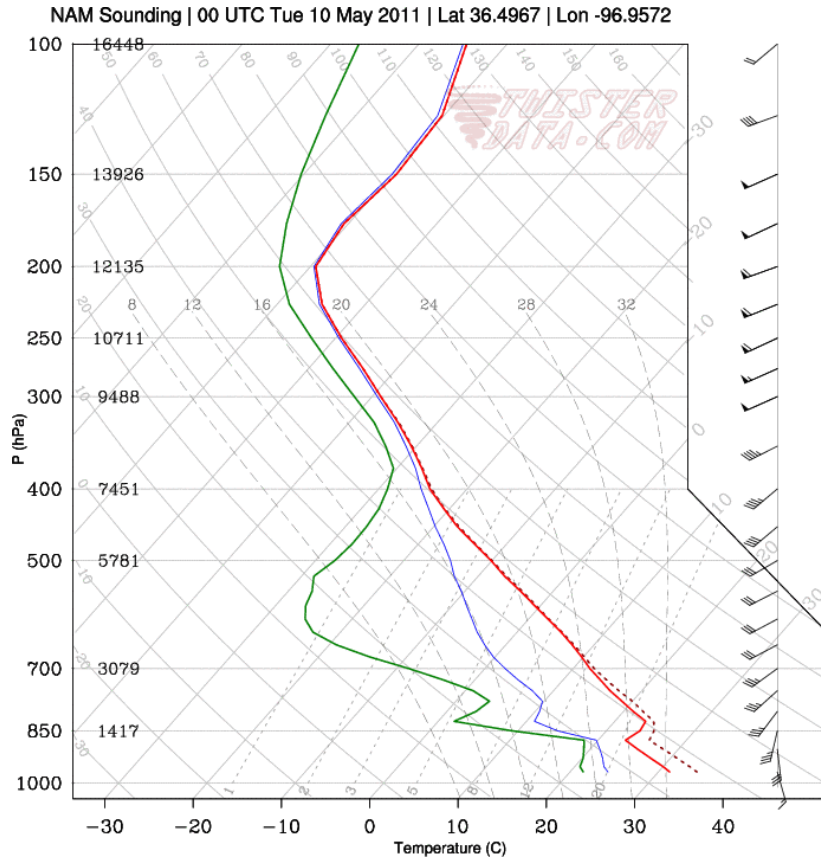
Upper Level Support



Precip



Forecast Soundings



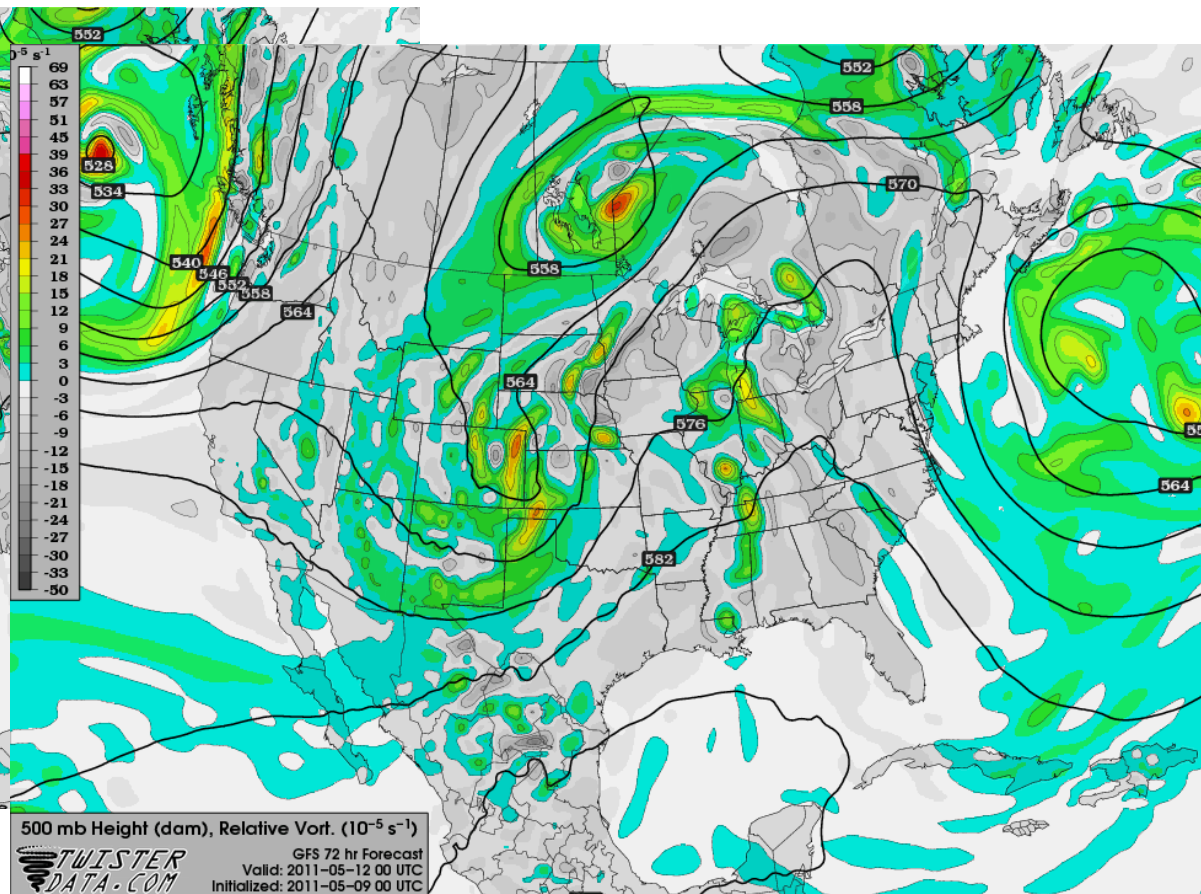
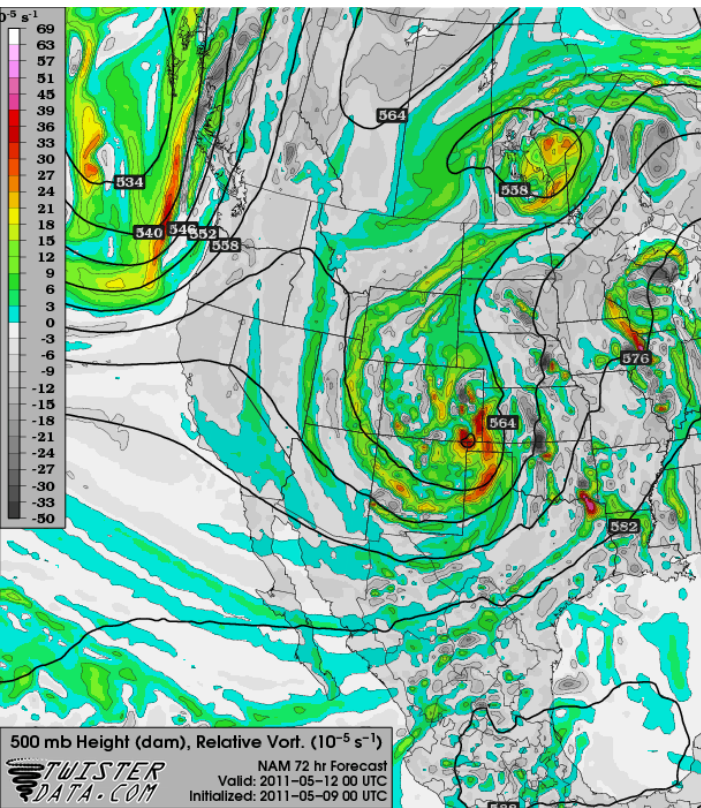
00Z Thursday

Finally the upper-level trough is forecast to eject out into the Southern Plains late Wednesday.

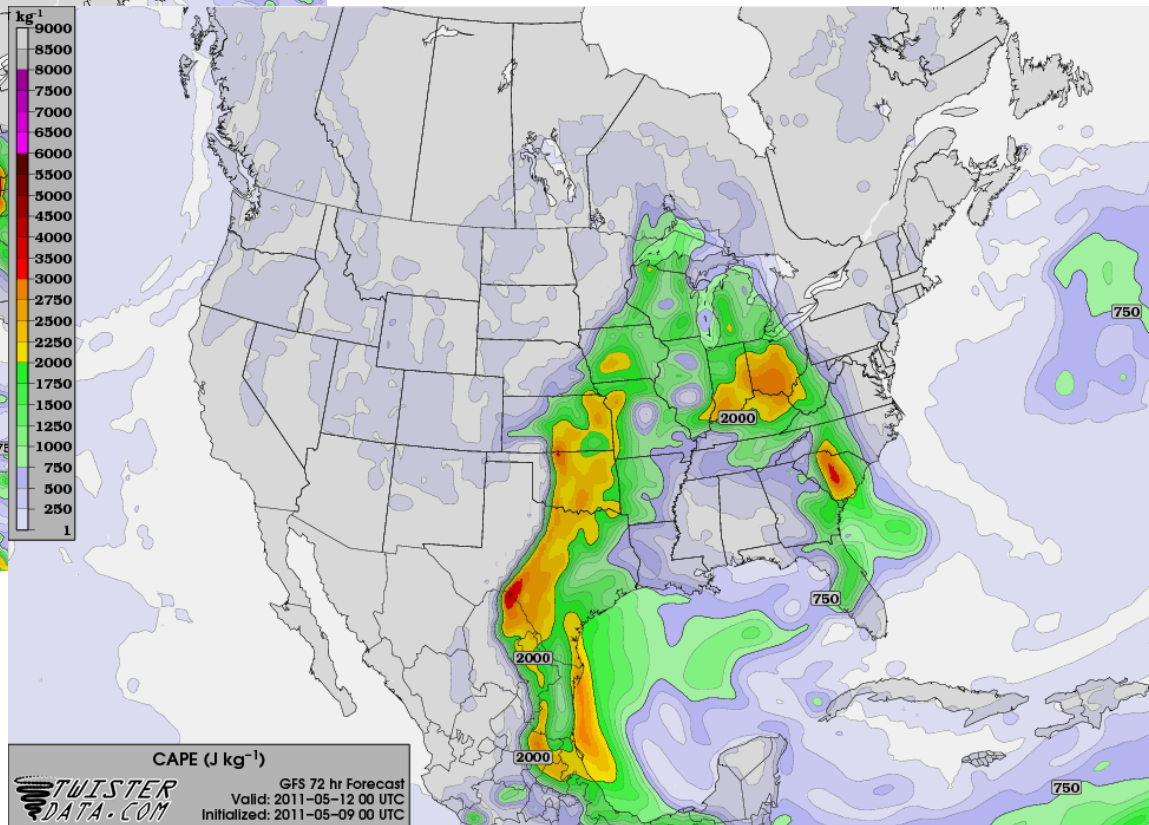
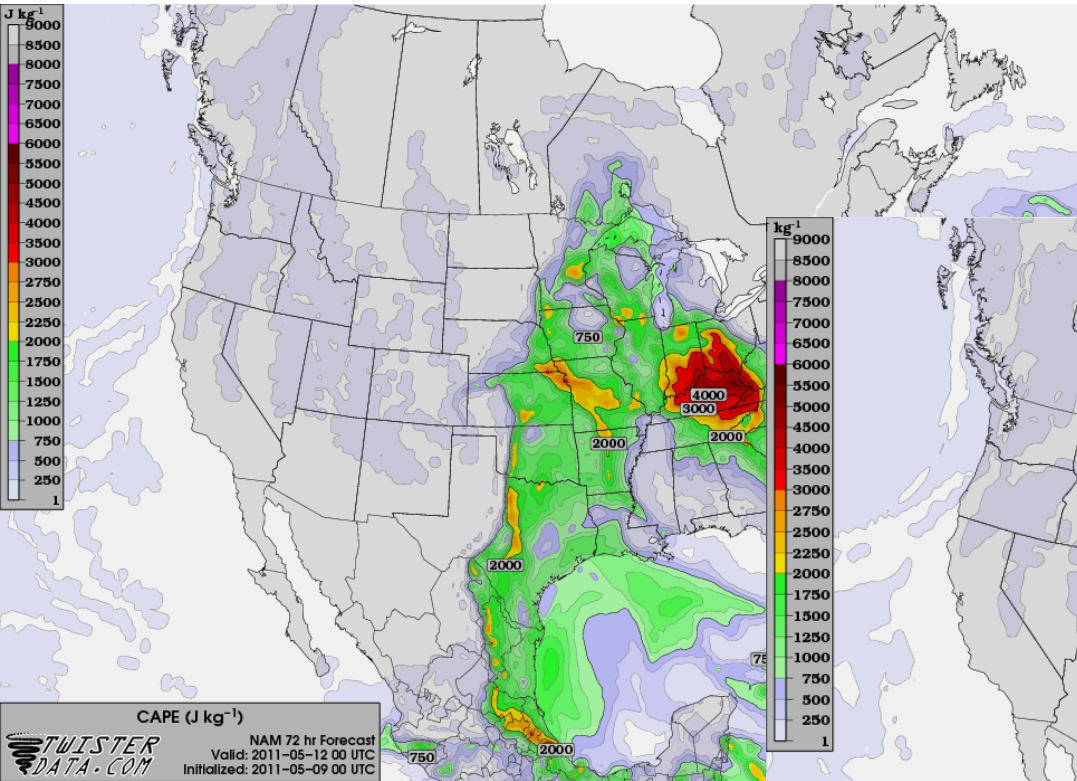
Waiting on the trough

NGM

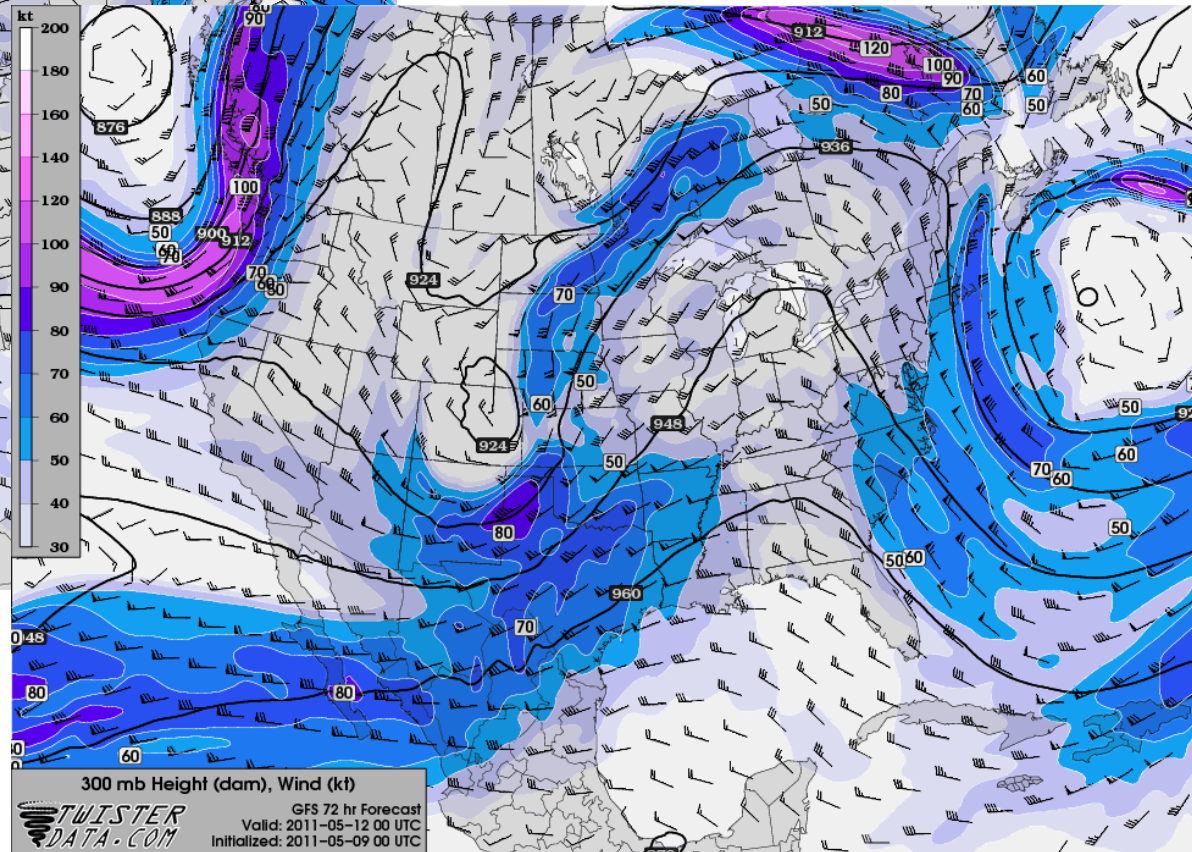
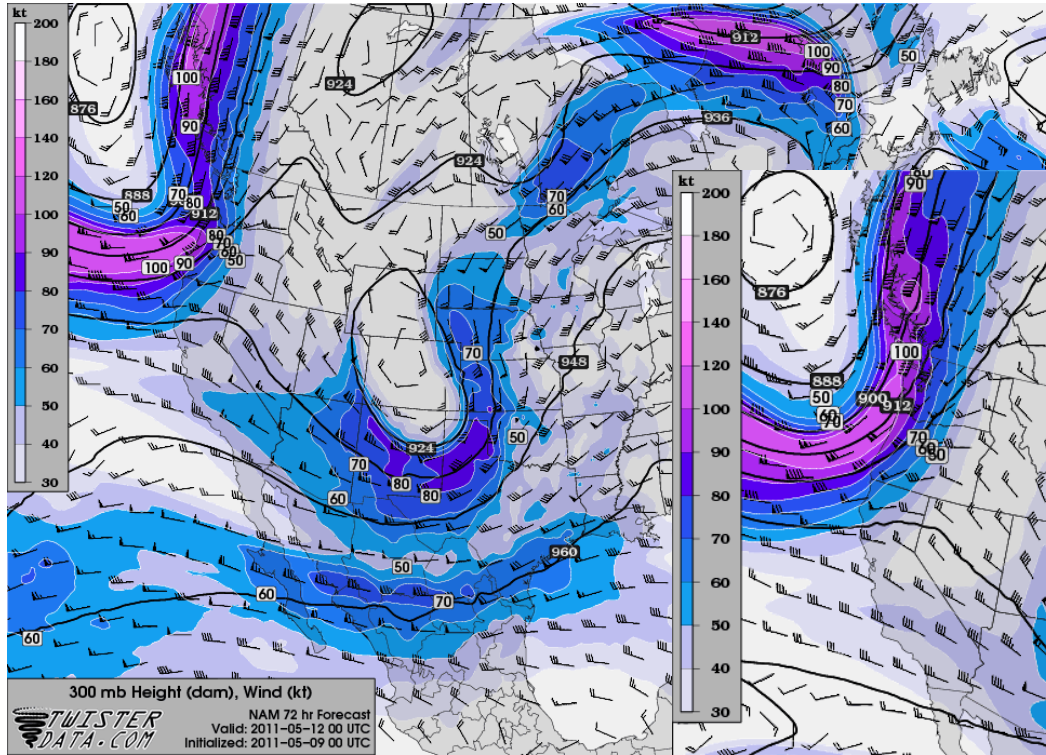
GFS



Stability



Jet Configuration



SREF probabilities of precip

- <http://www.spc.noaa.gov/exper/sref/frames.php?run=2011050903>

The extended forecast

<http://mag.ncep.noaa.gov/NCOMAGWEB/app/controller?prevPage=Model&MainPage=index&model=GFS&area=NAMER&areaDesc=North+America+-+US%2C+Canada%2C+and+no>

Weather Service Forecast

- <http://forecast.weather.gov/MapClick.php?map.x=222&map.y=20&site=oun&zmx=1&zmy=1>