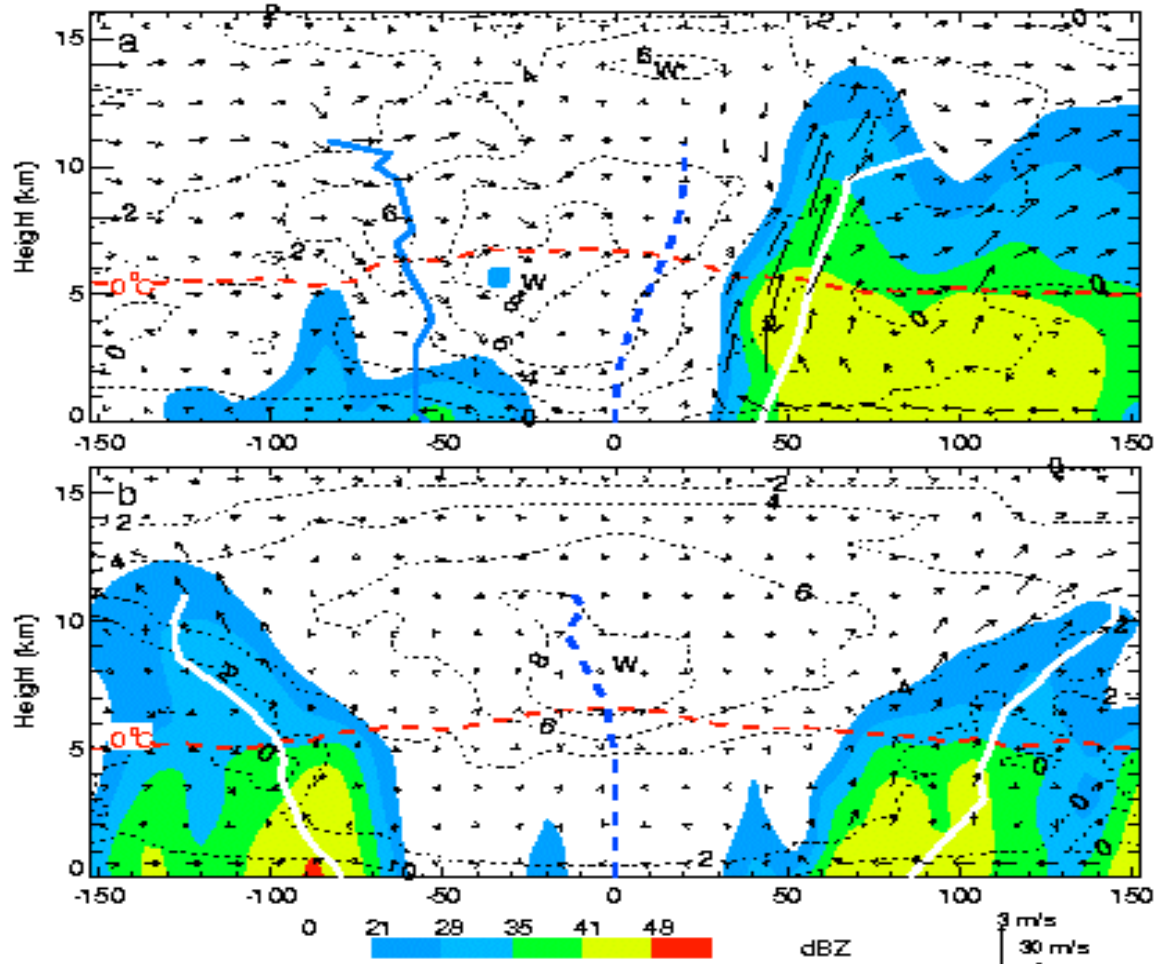
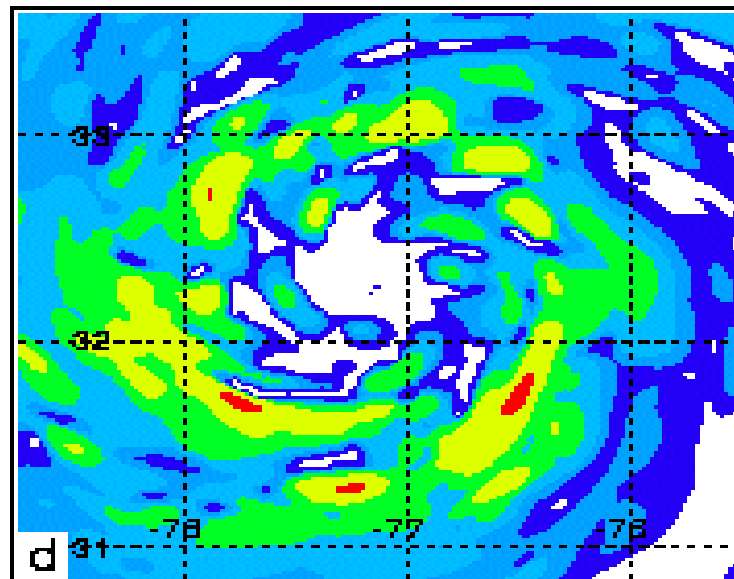
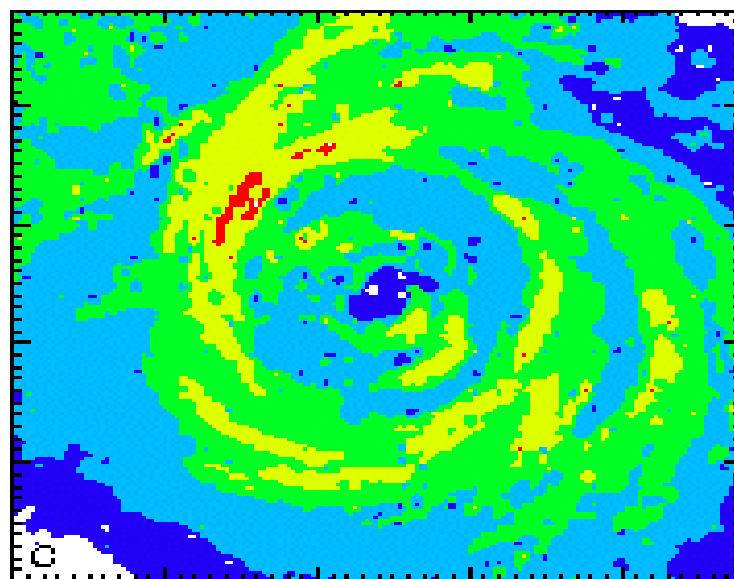
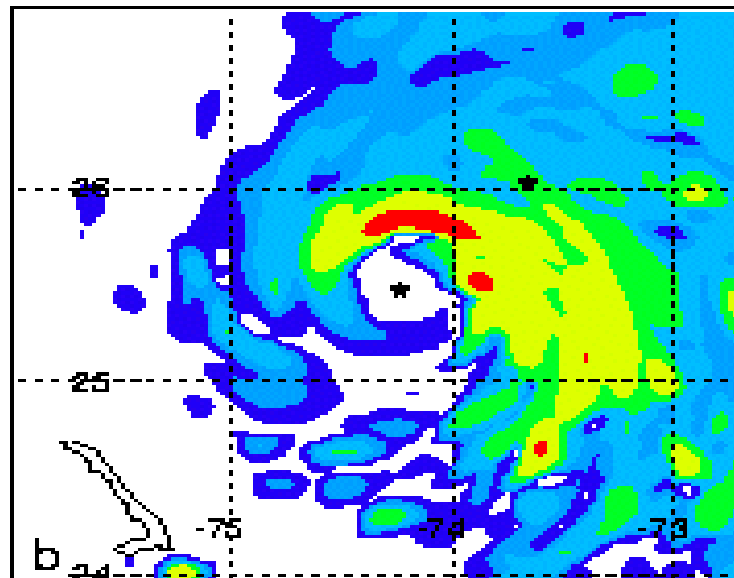
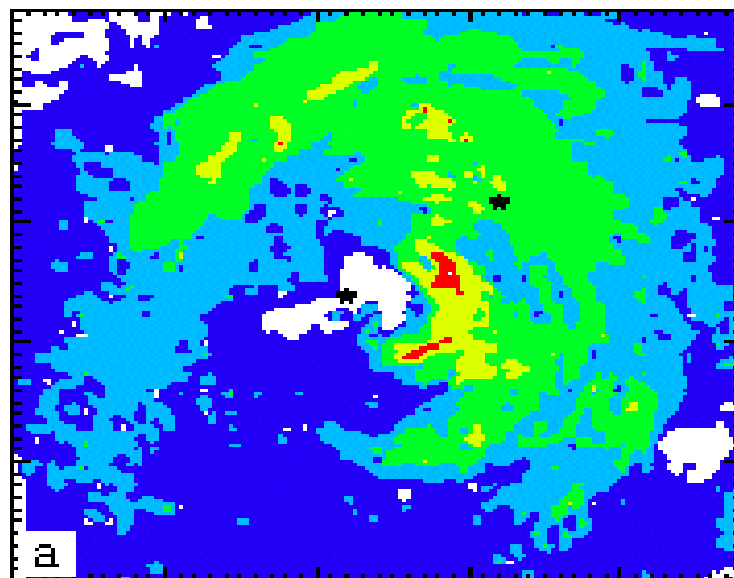


The Eyewall Replacement in Bonnie



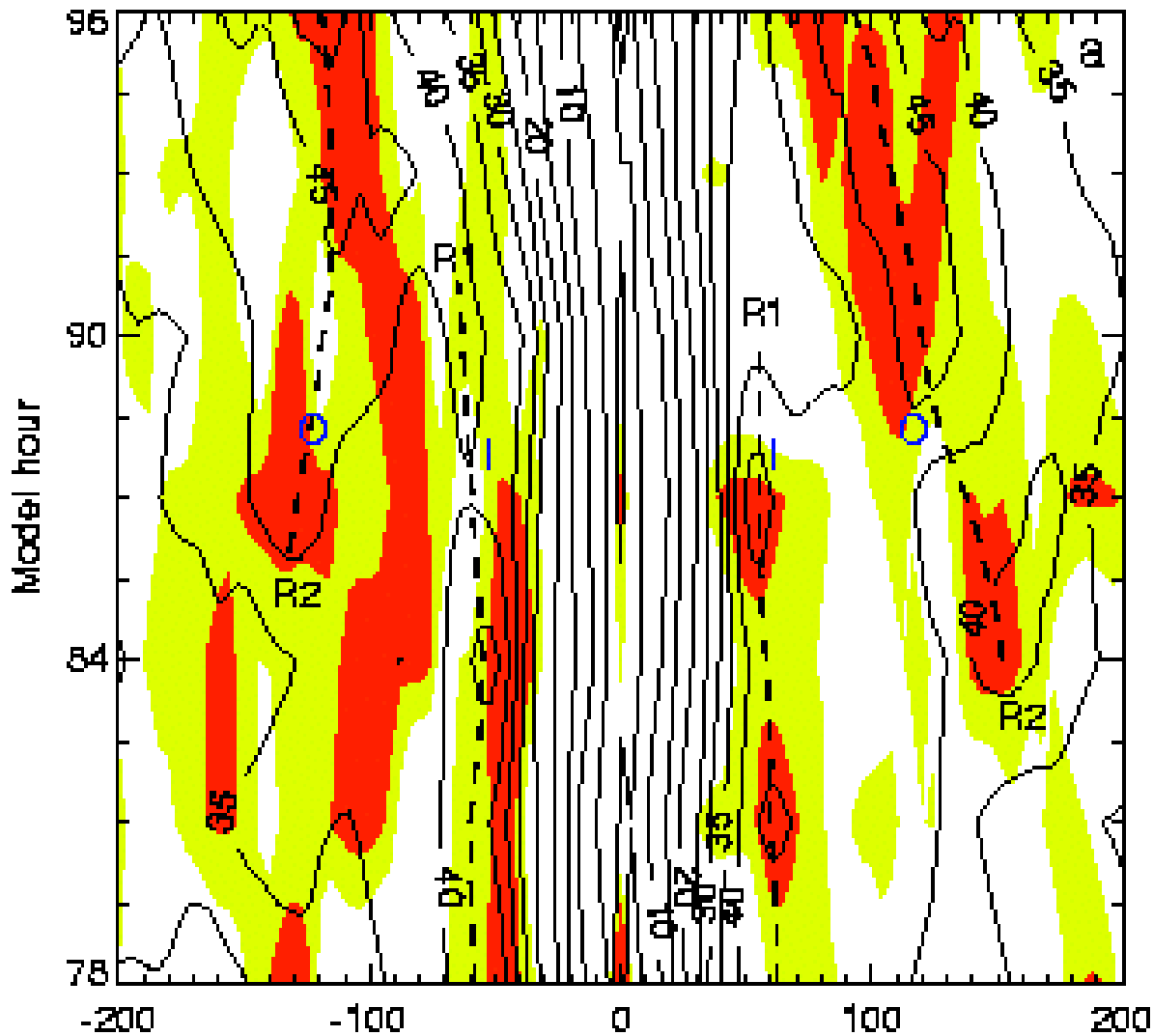
Da-Lin Zhang and Tong Zhu
Department of Meteorology, University of Maryland

Verification: 2200UTC 24 (51-h) and 1240UTC 26 (93-h)

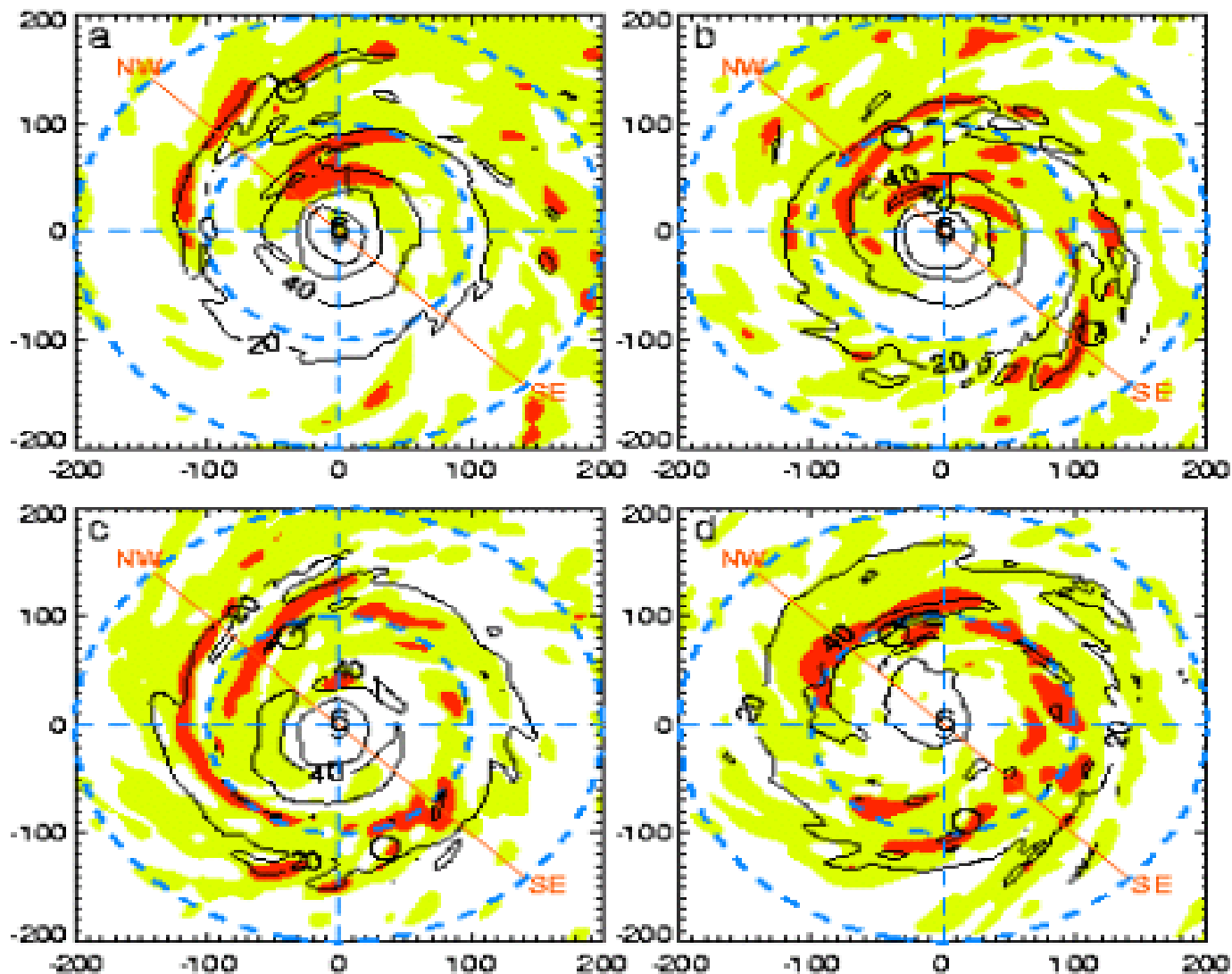


0 5 21 28 35 41 48 dBZ

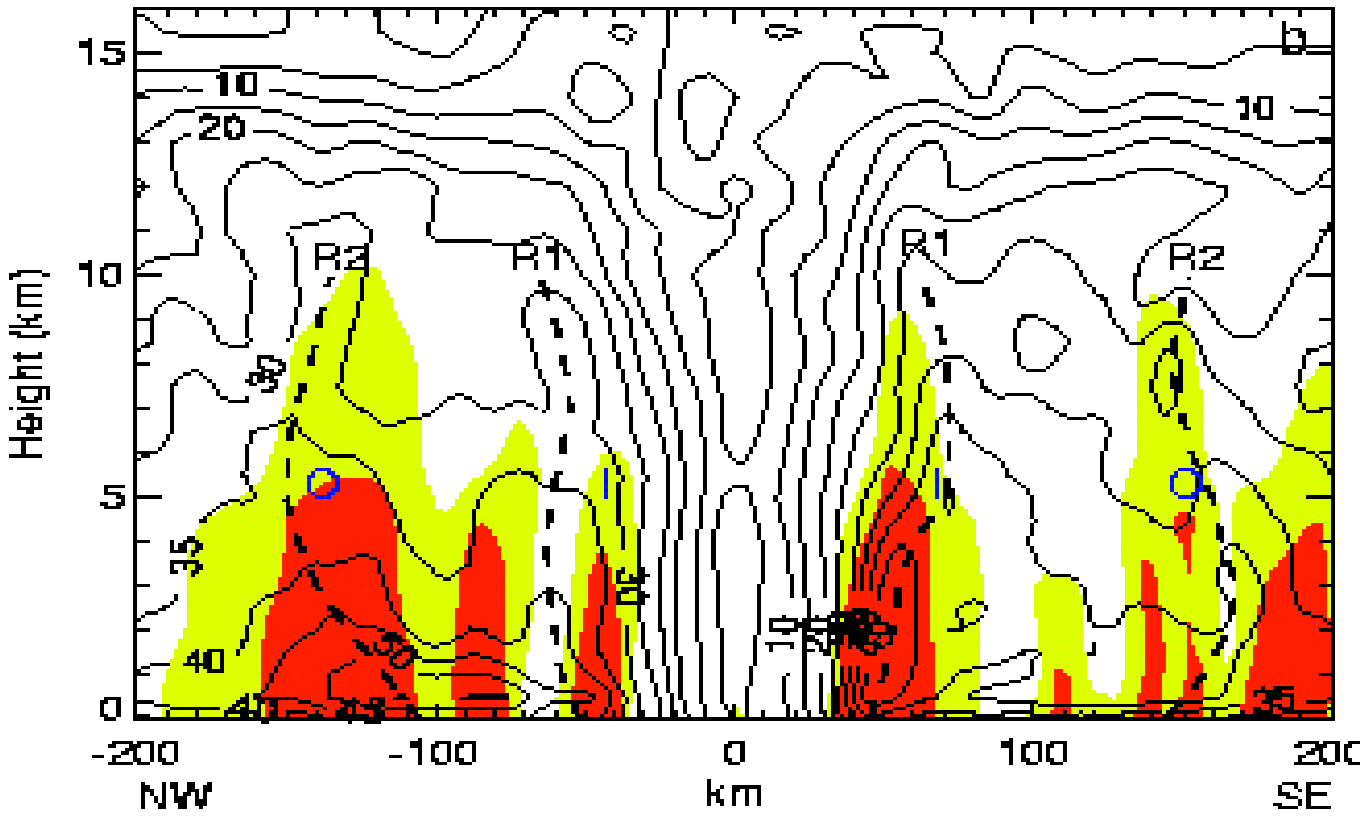
Time-radius cross section of horizontal winds at $z = 3$ km



Surface pressure gradients, the layered averaged reflectivity from 78, 84, 90 and 96 h simulations



NW-SE vertical cross section of horizontal winds & reflectivity



A conceptual model of the eyewall replacement

