

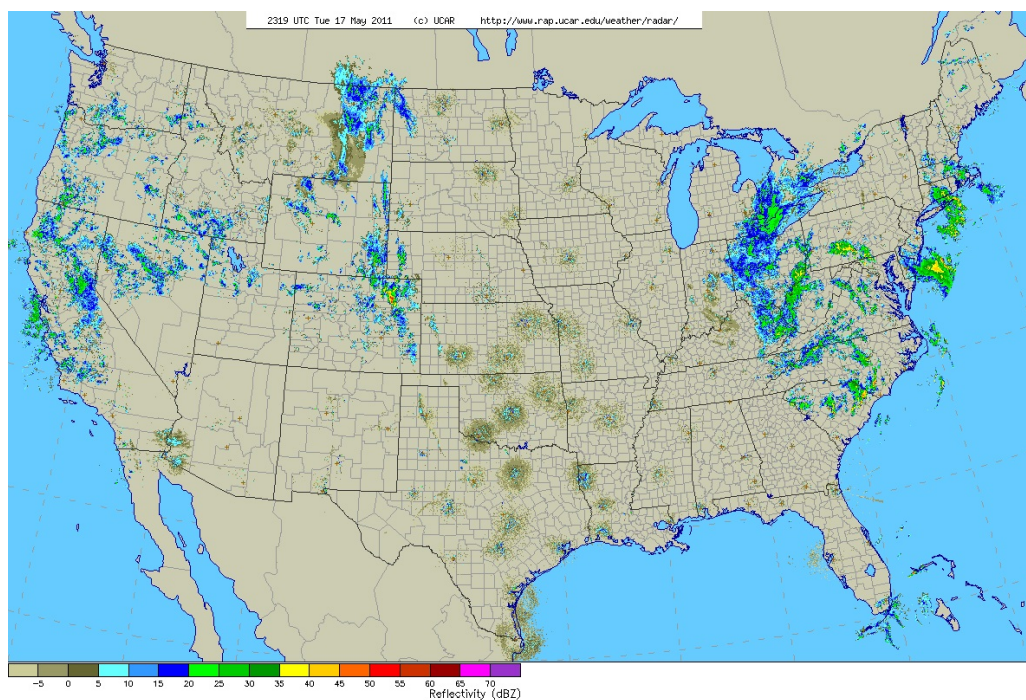
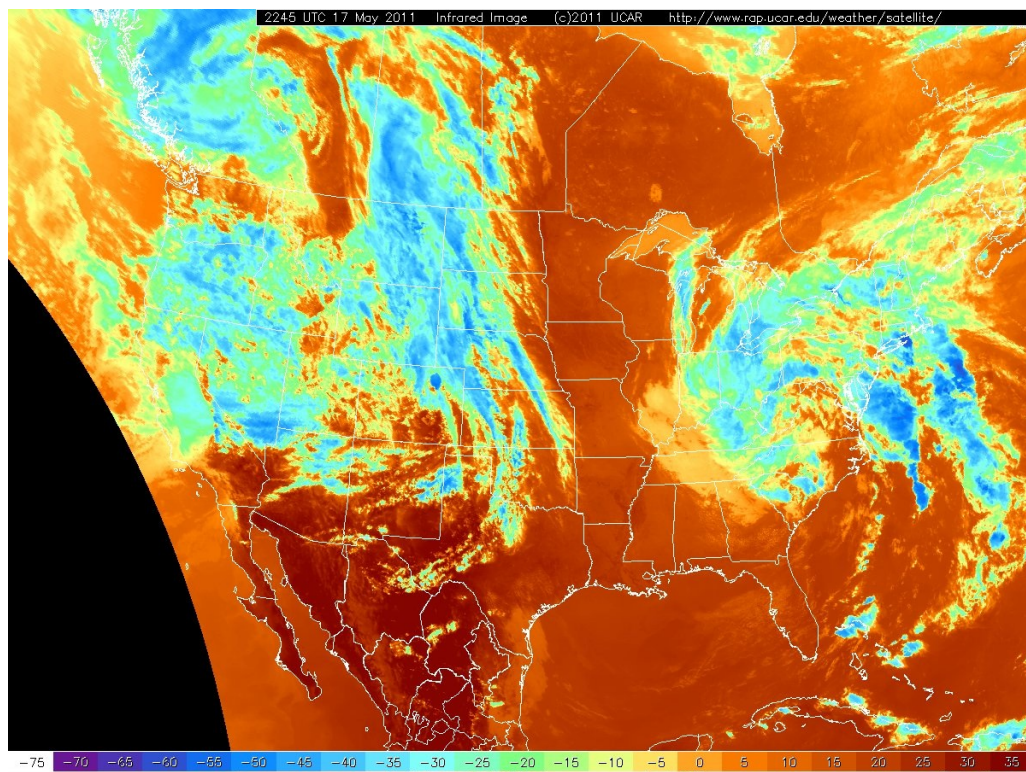
Afternoon Update, May 17

Submitted by cwall on Tue, 05/17/2011 - 18:35

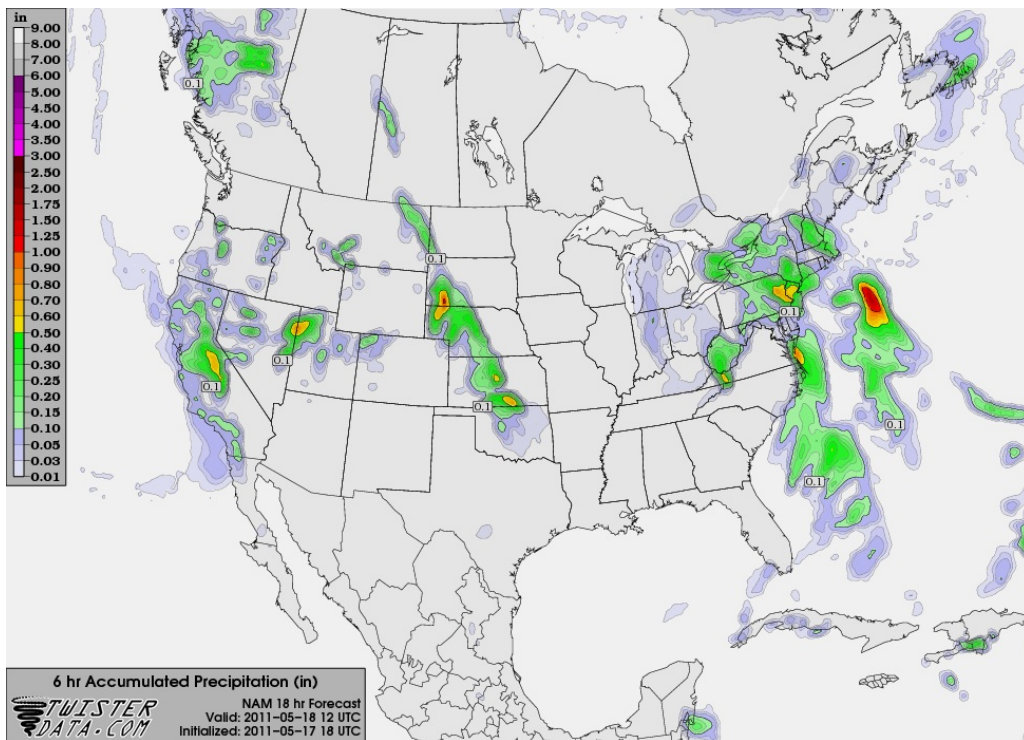
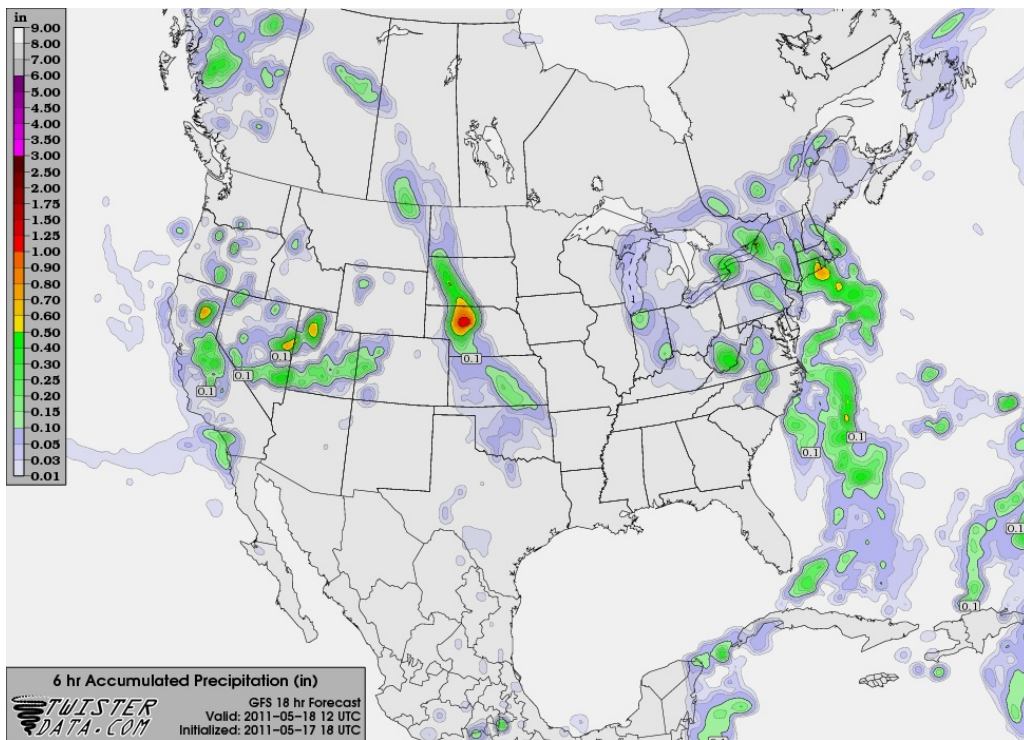
- [Central Facility](#)

Precipitation is expected in the general vicinity of the central facility between 06-12 UTC Wednesday. Models differ on the coverage and exact timing.

Current satellite and radar imagery shows convection in Colorado and Texas as forecast by the models.



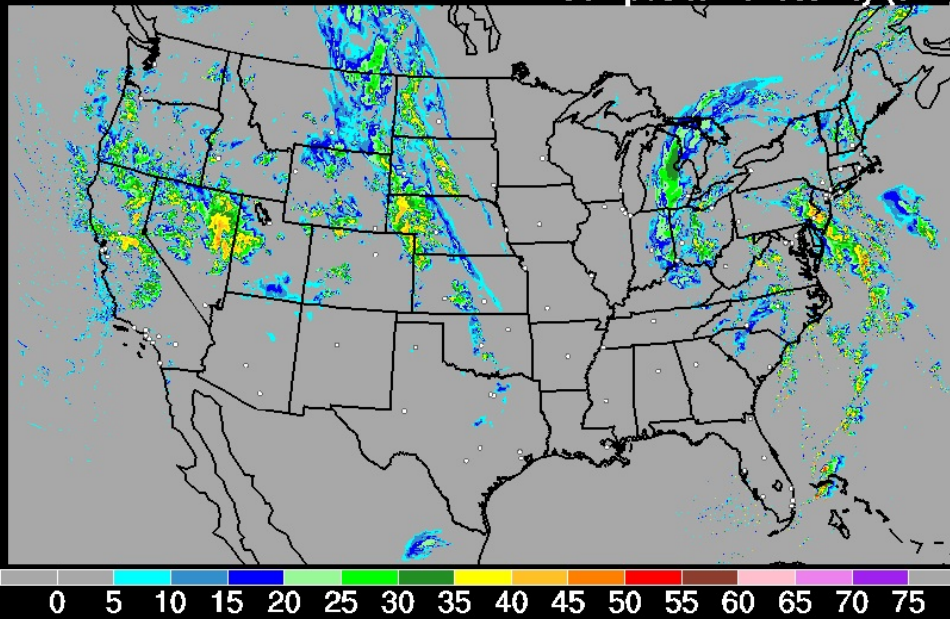
GFS generally shows more widespread precipitation with lower totals than NAM.



Higher resolution models differ slightly in terms of timing- the HRRR has convection moving across the area closer to 04 UTC, while the NSSL WRF shows developing convection over the central facility later in the evening.

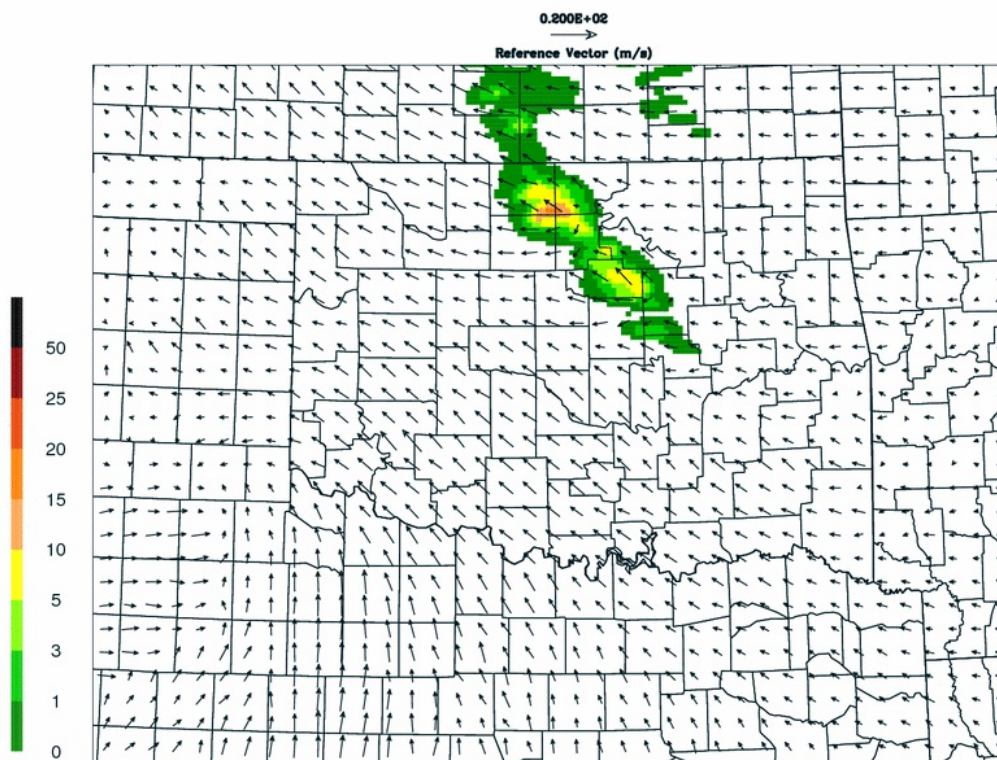
HRRR 05/17/2011 (20:00) 08:00 hr fcst

Valid 05/18/2011 04:00 UTC
Composite Reflectivity (dBz)



1h Prec, 10m WIND
01h accum
VALID 08Z 18 MAY 11

NSSL Realtime WRF
32-H FCST
4.0 KM LMB CON GRD



The latest OUN discussion mentions the likelihood of showers and thunderstorms in northern Oklahoma:

MORE SIGNIFICANT COVERAGE OF RAIN AND [THUNDER](#) SHOULD OCCUR LATE TONIGHT AS A [LOW LEVEL JET](#) AND DEEPER GULF [MOISTURE](#) RUN OUT FROM BENEATH A DEVELOPING [CAP](#). THE EDGE OF THE [CAP](#) SHOULD SET UP FROM ABOUT ALVA DOWN TO OKLAHOMA CITY...

WITH BETTER RAIN CHANCES EAST OF THAT LINE.

All models show widespread precipitation in Kansas and Nebraska.

Forecasts

Time of Day:
Morning

Forecast for Day 0:

Forecast for Day 1:

Forecast for Day 2:

Extended Outlook: